

PCT

WORLD INTELLECTUAL PROPERTY ORGANIZATION
International Bureau



INTERNATIONAL APPLICATION PUBLISHED UNDER THE PATENT COOPERATION TREATY (PCT)

(51) International Patent Classification ⁶ : A61K 38/00	A2	(11) International Publication Number: WO 99/61040 (43) International Publication Date: 2 December 1999 (02.12.99)								
<p>(21) International Application Number: PCT/US99/11073</p> <p>(22) International Filing Date: 19 May 1999 (19.05.99)</p> <p>(30) Priority Data:</p> <table border="0"> <tr> <td>60/086,587</td> <td>22 May 1998 (22.05.98)</td> <td>US</td> </tr> <tr> <td>09/088,766</td> <td>2 June 1998 (02.06.98)</td> <td>US</td> </tr> <tr> <td>09/150,485</td> <td>9 September 1998 (09.09.98)</td> <td>US</td> </tr> </table> <p>(71) Applicant: BOYS TOWN NATIONAL RESEARCH HOSPITAL [US/US]; 555 North 30th Street, Omaha, NE 68131 (US).</p> <p>(72) Inventor: COSGROVE, Dominic; 5612 Howard Street, Omaha, NE 68106 (US).</p> <p>(74) Agent: MUETING, Ann, M.; Mueting, Raasch, Gebhardt, P.A., P.O. Box 581415, Minneapolis, MN 55458-1415 (US).</p>	60/086,587	22 May 1998 (22.05.98)	US	09/088,766	2 June 1998 (02.06.98)	US	09/150,485	9 September 1998 (09.09.98)	US	<p>(81) Designated States: AE, AL, AM, AT, AU, AZ, BA, BB, BG, BR, BY, CA, CH, CN, CU, CZ, DE, DK, EE, ES, FI, GB, GD, GE, GH, GM, HR, HU, ID, IL, IN, IS, JP, KE, KG, KP, KR, KZ, LC, LK, LR, LS, LT, LU, LV, MD, MG, MK, MN, MW, MX, NO, NZ, PL, PT, RO, RU, SD, SE, SG, SI, SK, SL, TJ, TM, TR, TT, UA, UG, UZ, VN, YU, ZA, ZW, ARIPO patent (GH, GM, KE, LS, MW, SD, SL, SZ, UG, ZW), Eurasian patent (AM, AZ, BY, KG, KZ, MD, RU, TJ, TM), European patent (AT, BE, CH, CY, DE, DK, ES, FI, FR, GB, GR, IE, IT, LU, MC, NL, PT, SE), OAPI patent (BF, BJ, CF, CG, CI, CM, GA, GN, GW, ML, MR, NE, SN, TD, TG).</p> <p>Published <i>Without international search report and to be republished upon receipt of that report.</i></p>
60/086,587	22 May 1998 (22.05.98)	US								
09/088,766	2 June 1998 (02.06.98)	US								
09/150,485	9 September 1998 (09.09.98)	US								
<p>(54) Title: USE OF $\alpha 1\beta 1$ INTEGRIN RECEPTOR INHIBITORS AND TGF-$\beta 1$ INHIBITORS IN THE TREATMENT OF KIDNEY DISEASE</p>										
<p>(57) Abstract</p> <p>The present invention provides methods for treating (i.e., delaying the onset of, slowing the progression of, and/or reversing) kidney disorders (e.g., renal glomerulonephritis and/or renal fibrosis). Certain of these methods involve administering an $\alpha 1\beta 1$ integrin receptor inhibitor optionally in combination with a TGF-$\beta 1$ inhibitor. The present invention also provides a mouse model for kidney disease wherein the mouse does not express a normal collagen type 4 composition in the GBM (i.e., it does not incorporate collagen $\alpha 3(IV)$, $\alpha (IV)$, and $\alpha 5(IV)$ chains into its glomerular basement membrane) and does not express the $\alpha 1\beta 1$ integrin receptor.</p>										

Best Available Copy

FOR THE PURPOSES OF INFORMATION ONLY

Codes used to identify States party to the PCT on the front pages of pamphlets publishing international applications under the PCT.

AL	Albania	ES	Spain	LS	Lesotho	SI	Slovenia
AM	Armenia	FI	Finland	LT	Lithuania	SK	Slovakia
AT	Austria	FR	France	LU	Luxembourg	SN	Senegal
AU	Australia	GA	Gabon	LV	Latvia	SZ	Swaziland
AZ	Azerbaijan	GB	United Kingdom	MC	Monaco	TD	Chad
BA	Bosnia and Herzegovina	GE	Georgia	MD	Republic of Moldova	TG	Togo
BB	Barbados	GH	Ghana	MG	Madagascar	TJ	Tajikistan
BE	Belgium	GN	Guinea	MK	The former Yugoslav Republic of Macedonia	TM	Turkmenistan
BF	Burkina Faso	GR	Greece	ML	Mali	TR	Turkey
BG	Bulgaria	HU	Hungary	MN	Mongolia	TT	Trinidad and Tobago
BJ	Benin	IE	Ireland	MR	Mauritania	UA	Ukraine
BR	Brazil	IL	Israel	MX	Mexico	UG	Uganda
BY	Belarus	IS	Iceland	NE	Niger	US	United States of America
CA	Canada	IT	Italy	NL	Netherlands	UZ	Uzbekistan
CF	Central African Republic	JP	Japan	NO	Norway	VN	Viet Nam
CG	Congo	KE	Kenya	NZ	New Zealand	YU	Yugoslavia
CH	Switzerland	KG	Kyrgyzstan	PL	Poland	ZW	Zimbabwe
CI	Côte d'Ivoire	KP	Democratic People's Republic of Korea	PT	Portugal		
CM	Cameroon	KR	Republic of Korea	RO	Romania		
CN	China	KZ	Kazakstan	RU	Russian Federation		
CU	Cuba	LC	Saint Lucia	SD	Sudan		
CZ	Czech Republic	LI	Liechtenstein	SE	Sweden		
DE	Germany	LK	Sri Lanka	SG	Singapore		
DK	Denmark	LR	Liberia				
EE	Estonia						

5 **USE OF α 1 β 1 INTEGRIN RECEPTOR INHIBITORS AND TGF- β 1
INHIBITORS IN THE TREATMENT OF KIDNEY DISEASE**

FIELD OF THE INVENTION

This invention relates to the field of kidney disease (i.e., kidney disorder)
10 characterized by glomerulonephritis and/or fibrosis. In particular, this invention
relates to the use of α 1 β 1 integrin receptor inhibitors in kidney disorders.
Further, this invention relates to the use of α 1 β 1 integrin inhibitors in
combination with TGF- β 1 inhibitors in kidney disorders.

15 **BACKGROUND OF THE INVENTION**

In the United States, approximately 12,000 people currently live with
Alport syndrome. This inherited disorder results in progressive renal disease that
is only treatable by dialysis and kidney transplant. Transplanted kidneys are
usually rejected. Thus, alternative treatments are needed. However, there is
20 currently no treatment that addresses the mechanism of the disease onset or
progression. Thus, what is needed is a treatment method that attacks the
mechanism of disease onset and/or progression, one that could substantially slow
disease conditions, such as renal glomerulonephritis and renal fibrosis.

A number of kidney diseases are associated with alterations in matrix
25 homeostasis, where the delicate balance of synthesis and turnover of structural
molecules is interrupted. As one example, Alport syndrome is a disease
resulting in progressive renal failure and is associated with sensorineural hearing
loss. Male carriers are most affected and ultrastructural studies reveal
abnormalities in the glomerular basement membrane (GBM) of affected
30 individuals. About one in 20,000 people have Alport syndrome, making the
disease one of the more prevalent known genetic disorders. See, for example,
Atkin et al., "Alport Syndrome" In R.W. Schrier & C.W. Gottschalk (Eds.),

Diseases of the Kidney, 4th ed., Chap. 19, Little Brown, Boston, pp. 617-641, 1988. X-linked Alport syndrome is caused by any of a series of mutations in the collagen 4A5 gene (Barker et al., *Science*, 348:1224-1227, 1990). At least 60 different mutations in the gene have been identified. The autosomal form of

5 Alport syndrome displays the same range of phenotypes as the X-linked form and results from mutations in either basement membrane collagen gene 4A3 (COL4A3) or 4A4 (COL4A4). See, for example, Lemmink et al., *Hum. Mol. Gen.*, 3:1269-1273, 1994, and Mochizuki et al., *Nature Genet.*, 8:77-81, 1994. Other diseases of the basement membrane include Goodpasture syndrome, which

10 is due to an acute autoimmune response directed against an epitope on the NC1 domain of collagen 4A3 (Hudson et al., *Kidney Int.*, 43:135-139, 1993), and diffuse leiomyomatosis, a benign smooth muscle tumor that is associated with a deletion of both collagen 4A5 and 4A6 (Zhou et al., *Science*, 261:1167-1169, 1993).

15 Basement membranes are specialized extracellular structures associated with nearly every organ and tissue in the body. They are usually found at the boundary between cells and connective tissue, but may also be found between epithelial and endothelial cells, as is the case in a kidney glomerulus (i.e., cluster of capillaries). The predominant building blocks of basement membranes

20 include type IV collagen, laminin, heparin sulfate proteoglycan, entactin, and sometimes fibronectin and type V collagen. The most highly represented component in all basement membranes is type IV collagen, a distinct collagen type found only in basement membranes. In its native form, type IV, like all collagens, is composed of three collagen molecules assembled in a triple helix

25 consisting of distinct combinations of the six alpha chains (4A1-4A6). The 4A1 and 4A2 chains (also referred to as the $\alpha 1(\text{IV})$ and $\alpha 2(\text{IV})$ chains) are the most common (Timpl, *J. Biochem.*, 180:487-502, 1989). Type IV collagens differ from interstitial collagens in a number of ways. The helical structure of the alpha chain association does not strictly adhere to the glycine-X-Y motif

30 observed in other collagens; it contains 3-hydroxyproline rather than 4-hydroxyproline, and is rich in carbohydrate. The resulting superstructure of

collagen is a chicken wire-like network of basement membrane collagen. This network is the foundation onto which the accessory molecules (laminin, heparin sulfate, etc.) bind.

Basement membranes are very heterogeneous structures, which accounts
5 for their diverse functional properties. The complexity of these structures is still poorly understood. Several novel basement membrane collagen chains (alpha 3, 4, 5, and 6 chains) were only recently discovered. See, for example, Gunwar et al., *J. Biol. Chem.*, 266:15318-15324, 1990; Hostikka et al., *Proc. Natl. Acad. Sci. USA*, 87:1606-1610, 1990; Butkowski et al., *J. Biol. Chem.*, 262:7874-7877,
10 1987; and Zhou et al., *Science*, 261:1167-1169, 1993. Interestingly, the novel chains have been found only in certain tissues (e.g., the glomerulus of the kidney, the Descemet's membrane of the eye, the lens, the skin, the lung, the testis, and the cochlea). See, for example, Kleppel et al., *Am. J. Pathol.*, 134:813-825, 1989, and Tryggvason et al., *Kidney Int.*, 43:38-44, 1993. The role
15 of these novel chains in basement membrane assembly and function is currently unknown. It is believed that these novel basement membrane collagens form separate networks distinct from the networks of collagen types 4A1 ($\alpha 1(\text{IV})$) and 4A2 ($\alpha 2(\text{IV})$).

Kidney glomerular basement membranes (GBMs) are integral to the
20 ultrafiltration process (i.e., in which blood is filtered to remove metabolites for excretion in the form of urine, for example). Alport syndrome results in a massive accumulation of extracellular matrix and a compromised basement membrane, resulting in focal and segmental glomerulonephritis (i.e., inflammation of the capillary loops in the glomeruli of the kidney), which
25 ultimately results in fatal uremia (i.e., excess urea in the blood as a result of kidney failure). Many of the same extracellular matrix molecules (e.g., collagen type I, fibronectin, laminin, and collagen type IV) also progressively accumulate in the GBM of patients with IDDM (insulin dependent diabetes mellitus) nephritis. In this disease, however, the GBM thickens, but lacks the focal
30 thinning and splitting (segmenting) of the GBM, which is characteristic of Alport syndrome.

The integrins are a family of heterodimeric transmembrane glycoprotein receptors that bind to components of basal lamina and extracellular matrix. They function as adhesion molecules involved in cell aggregation and in anchoring cells to basal lamina. They also transduce signals to the nucleus, and are
5 involved in modulating gene expression, particularly gene expression for cell migration and cell differentiation (Hynes, *Cell*, 69:11-25, 1992). Over 20 different integrin receptors are known, which include about 14 different alpha subunits and about 8 different beta subunits (DiSimone, *Curr. Opin. Cell Biol.*, 6:182-194, 1994).

10 In the renal (kidney) glomerulus, there are distinct sets of integrin receptors. These are associated with either the mesangial matrix (i.e., a membrane that helps support the capillary loops in a kidney glomerulus) or visceral epithelial cells (Patey et al., *Cell Adhesion Commun.*, 2:159-167, 1994). The most prevalent integrin receptor on adult glomerular visceral epithelial cells
15 is the $\alpha 3 \beta 1$ heterodimer (Adler, *Am. J. Pathol.*, 141:571-578, 1992; and Patey et al., *Cell Adhesion Commun.*, 2:159-167, 1994). The $\beta 5$ subunit has been shown to be expressed in adult visceral epithelial cells (Yamada et al., *Cell Adhesion Communic.*, 3:311-325, 1995), and the $\alpha 1$, $\alpha 3$, $\alpha 5$, αV , $\beta 1$, and $\beta 3$ integrin receptors are expressed developmentally during kidney morphogenesis
20 (Korhonen et al., *Lab. Invest.*, 62:616-625, 1990; Wada et al., *J. Cell. Biol.*, 132:1161-1176, 1996; and Yamada et al., *Cell Adhesion Communic.*, 3:311-325, 1995). The $\alpha 1 \beta 1$ heterodimeric integrin receptor is the only integrin receptor identified on the surface of mesangial cells in the renal glomerulus.

A gene knockout mouse at the $\alpha 3$ integrin receptor subunit has been
25 produced. The offspring die of kidney dysfunction shortly after birth (Kreidberg et al., *Dev.*, 122:3537-3547, 1996). The ultrastructural pathology of the GBM in the neonates of this model is remarkably similar to that observed in advanced Alport syndrome. The basement membrane appears rarefied (i.e., irregularly thickened, thinned, and split) and the foot processes of the visceral epithelial
30 cells appear fused. Since one ligand for the $\alpha 3 \beta 1$ receptor is type IV collagen (Krishnamurti et al., *Lab. Invest.*, 74:650-665, 1996; and Rupprecht et al.,

Kidney Int., 49:1575-1582, 1996), and since this receptor localizes along the plane of contact between visceral epithelial cells and the GBM (Baraldi et al., *Nephron*, 66:295-301, 1994), the observations listed above for the $\alpha 3$ integrin knockout support a model where such integrin/ligand interactions play an important role in basement membrane development.

In a normal animal, the type IV collagen in embryonic glomerular basement membrane (GBM) up to the time of birth is comprised entirely of the $\alpha 1(\text{IV})$ and $\alpha 2(\text{IV})$ chains (referred to as the classical collagen chains). Shortly after birth, a developmental switch occurs where the $\alpha 3(\text{IV})$, $\alpha 4(\text{IV})$, and $\alpha 5(\text{IV})$ chains (referred to as the novel collagen chains) are clearly detectable in the GBM, and the $\alpha 1(\text{IV})$ and $\alpha 2(\text{IV})$ chains become predominantly localized to the mesangial matrix (Minor & Sanes, *J. Cell. Biol.*, 127:879-891, 1994).

In the adult kidney a thin layer of GBM comprised of the $\alpha 1(\text{IV})$ and $\alpha 2(\text{IV})$ chains lies adjacent to the endothelial cell layer, while the majority of the full thickness of the GBM is comprised of the $\alpha 3(\text{IV})$, $\alpha 4(\text{IV})$, and $\alpha 5(\text{IV})$ chains (Desjardins & Bendayan, *J. Cell. Biol.*, 113:689-700, 1991; and Kashtan et al., *J. Clin. Invest.*, 78:1035-1044, 1996). There is biochemical evidence suggesting that the two different sets of collagen chains form separate networks (Kleppel et al., *J. Biol. Chem.*, 267:4137-4142, 1992). In familial nephritis, null mutations (i.e., mutations that destroy gene expression) in either the $\alpha 3(\text{IV})$, the $\alpha 4(\text{IV})$, or the $\alpha 5(\text{IV})$ genes results in the absence of all three chains in the GBM, presumably due to obligatory associations in macromolecular assembly of the GBM suprastructure. This results in the presence of $\alpha 1(\text{IV})$ and $\alpha 2(\text{IV})$ chains throughout the full thickness of the GBM. Thus, type IV collagen receptors on the surface of visceral epithelial cells in the Alport kidney (i.e., the kidney of an individual with Alport syndrome) are in direct contact with a GBM of uncharacteristic type IV collagen chain composition. At least one study has addressed the relative ability of the visceral epithelial cells to adhere to type IV collagen with these different compositions, and found that they adhere significantly better to basement membrane comprised of the novel chains when

compared directly with the classical chains $\alpha 1(\text{IV})$ and $\alpha 2(\text{IV})$. This adhesion could be blocked with antibodies against the $\alpha 3$ integrin receptor.

A mouse model for the autosomal form of Alport syndrome was created by targeted mutagenesis of the COL4A3 procollagen gene (Cosgrove et al.,
5 *Genes Dev.*, 10:2981-2992, 1996). The animal model develops a progressive glomerulonephritis with the onset of proteinuria at about four weeks of age and a mean age of death from renal failure at about 8.5 weeks in the inbred 129Sv/J background. Ultrastructural changes in the GBM are observed as early as one week of age, and throughout the GBM of most glomeruli by 3 weeks of age,
10 long before the onset of proteinuria. Extracellular matrix components including laminin-1, heparin sulfate proteoglycan, fibronectin, and entactin accumulate in the GBM. This mouse is referred to herein as the "Alport" mouse.

The accumulation of extracellular matrix in the GBM and the mesangium as a function of renal disease progression is a feature shared by a variety of
15 glomerular diseases, both in patients and in experimental animal systems. See, for example, Goyal & Wiggins, *Am. Soc. Nephrol.*, 1:1334-1342, 1991; Wilson et al., *Contrib. Nephrol. Basel, Karger*, 118:126-134, 1996; Razzaque et al., *Clin. Nephrol.*, 46:213-214, 1996; Yoshioka et al., *Kidney Int.*, 35:1203-1211, 1989; and Klahr et al., *N. Engl. J. Med.*, 318:1657-1666, 1988. In diabetes, the
20 primary mediator of this effect is thought to be prolonged exposure to non-enzymatically glycosylated serum proteins resulting from chronic high glucose levels (Doi et al., *Proc. Natl. Acad. Sci. USA*, 89:2873-2877, 1992; and Roy et al., *J. Clin. Invest.*, 93: 483-442, 1994).

For the majority of progressive glomerular disorders, over-production of
25 the transforming growth factor TGF- $\beta 1$ seems to be closely associated with the accumulation of extracellular matrix leading to fibrosis (i.e., the formation of fibrous tissue). See, for example, Border & Ruoslahti, *Nature (London)*, 346:371-374, 1992; Yang et al., *J. Am. Soc. Nephrol.*, 5:1610-1617, 1995; and Yamamoto et al., *Kidney Int.*, 45:916-927, 1994. In an animal model for
30 autoimmune nephritis, injection with either antibodies to TGF- $\beta 1$, or antisense oligonucleotides to the corresponding mRNA inhibited the progressive

glomerulonephritis and the accumulation of extracellular matrix (Border et al., *Nature (London)*, 346:371-374, 1990; and Akagi et al., *Kidney Int.*, 50:148-155, 1996).

The half-life of basement membrane collagen in the GBM of the rat has
5 been estimated at between 16 and 40 days based on pulse-chase studies with ³H-
proline (Daha et al., *Nephron*. 22:522-528, 1978). This is very slow in relation
with the turnover of heparin sulfate proteoglycans ($t_{1/2}$ = 20 hours) or other
sulfated macromolecules in the GBM ($t_{1/2}$ = 20-60 hours). The accumulation of
basement membrane proteins in the GBM of the Alport mouse model (Cosgrove
10 et al., *Genes Dev.*, 10:2981-2992, 1996) is likely the net effect of changes in both
the synthesis and the degradation of these proteins. Of the proteases involved in
the turnover of both GBM and mesangial matrix, the most characterized are the
metalloproteinases MMP-2 (72 kD collagenase) and MMP-9 (92 kD
collagenase), as well as MMP-3 (stromolysin-1). These enzymes will degrade
15 type IV collagen, in addition to a variety of other extracellular matrix
components.

Mesangial cells (and probably other glomerular cell types) also produce
natural inhibitors to the metalloproteinases. These are called TIMP's (for Tissue
Inhibitors of MetalloProteinases). These are relatively low molecular weight
20 glycoproteins. Of these, TIMP-1 is specific for stromolysin-1 and MMP-9,
while TIMP-2 and TIMP-3 will inhibit MMP-2 (Goldberg et al., *Proc. Natl.
Acad. Sci. USA*, 86:8207-8211, 1989; Staskus et al., *J. Biol. Chem.*, 266:449-
454, 1991; and Stetler-Stevenson et al., *J. Biol. Chem.*, 264:17374-17378, 1989).

Modulation of the metalloproteinases and their corresponding inhibitors
25 likely play a role in maintaining appropriate levels of GBM turnover. While
little is known regarding the regulation of the genes encoding these proteins in
the glomerulus, signal transduction via integrin receptor/ECM (extracellular
matrix) interaction may be a key aspect in this process.

There remains a need for animal models for Alport syndrome,
30 particularly one in which the disease progression is slowed significantly. There
also remains a need for new therapies to treat kidney diseases associated with

mesangial matrix expansion, and progressive matrix accumulation in the glomerular basement membrane and the tubulointerstitium, including Alport syndrome and insulin dependent diabetes mellitus, for example.

SUMMARY

5 The present invention provides various treatment methods for treating or limiting (i.e., delaying the onset of, slowing the progression of, and/or reversing) a kidney disorder in a patient (preferably, a mammal, and more preferably, a human). The kidney disorder preferably includes renal glomerulonephritis, renal
10 fibrosis, or both. These conditions can be associated with, for example, Alport syndrome, IDDM nephritis, mesangial proliferative glomerulonephritis, membrano proliferative glomerulonephritis, crescentic glomerulonephritis, diabetic nephropathy, and renal interstitial fibrosis.

In one embodiment, the method involves administering to the patient an
15 effective amount of an $\alpha 1\beta 1$ integrin receptor inhibitor. This $\alpha 1\beta 1$ integrin receptor inhibitor can be a blocking agent that binds to the $\alpha 1\beta 1$ integrin receptor binding site on the surface of a kidney cell. The blocking agent can be an at least 9-mer peptide fragment of a protein selected from the group consisting of laminin, fibronectin, entactin, and collagen type 4. Alternatively, the blocking
20 agent can be an antibody. Other agents that inhibit (i.e., inactivate) the $\alpha 1\beta 1$ integrin receptor by other mechanisms can also be used.

In another embodiment, the method involves administering to the patient an effective amount of a TGF- $\beta 1$ inhibitor in addition to the $\alpha 1\beta 1$ integrin receptor inhibitor. These inhibitors can be administered simultaneously (e.g., as in a
25 mixture) or sequentially. The TGF- $\beta 1$ inhibitor can be an agent that irreversibly binds to TGF- $\beta 1$ and inhibits its ability to bind with its receptor. Alternatively, the TGF- $\beta 1$ inhibitor can be an agent that inhibits the ability of TGF- $\beta 1$ to transduce signals to the nucleus of a kidney cell. The latter type of inhibitor is preferably a calcineurin inhibitor, such as tacrolimus (commercially available as
30 FK506). Other agents that inhibit (i.e., inactivate) TGF- $\beta 1$ by other mechanisms can also be used.

Preferably, the present invention provides methods for delaying the onset of and/or slowing the progression of Alport syndrome in a patient. In one embodiment, this method involves administering an effective amount of an agent that inhibits signal transduction through an $\alpha 1\beta 1$ integrin receptor of a kidney cell. In another embodiment, this method involves blocking an $\alpha 1\beta 1$ integrin receptor binding site on the surface of a kidney cell of the patient. These methods can be further enhanced by administering to the patient an effective amount of a TGF- $\beta 1$ inhibitor.

Preferably, the present invention also provides methods for delaying the onset of and/or slowing the progression of kidney disease in insulin dependent diabetes mellitus in a patient. In one embodiment, this method involves administering an effective amount of an agent that inhibits signal transduction through an $\alpha 1\beta 1$ integrin receptor of a kidney cell. In another embodiment, this method involves blocking an $\alpha 1\beta 1$ integrin receptor binding site on the surface of a kidney cell. These methods can be further enhanced by administering to the patient a TGF- $\beta 1$ inhibitor.

Further, methods are provided for limiting renal fibrosis in a patient. In one embodiment, the method involves reducing TGF- $\beta 1$ activity in the patient while inhibiting $\alpha 1\beta 1$ integrin receptors of the patient's kidney cells. This activity can be reduced by administering to the patient an agent that irreversibly binds to TGF- $\beta 1$ and inhibits its ability to bind with its receptor. Alternatively, this activity can be reduced by administering to the patient an agent capable of inhibiting the ability of TGF- $\beta 1$ to transduce signals to the nucleus of a kidney cell.

In yet another embodiment, methods are provided for limiting matrix accumulation in the GBM of a patient with Alport Syndrome. In one embodiment, the method involves reducing TGF- $\beta 1$ activity in the patient. This can be accomplished by administering TGF- $\beta 1$ inhibitors as described herein.

In a particularly preferred embodiment, a method is provided for limiting renal fibroses by administering to a patient a calcineurin inhibitor, preferably tacrolimus.

Further, the present invention provides a mouse model for kidney disease wherein the mouse does not express a normal collagen type 4 composition in the GBM as a result of knocking out the collagen $\alpha 3(\text{IV})$ gene. That is, the mouse does not incorporate the collagen $\alpha 3(\text{IV})$, $\alpha 4(\text{IV})$, or $\alpha 5(\text{IV})$ chains into the glomerular basement membrane (thus the GBM is comprised entirely of collagen $\alpha 1(\text{IV})$ and $\alpha 2(\text{IV})$ chains, with respect to its type IV collagen chain composition). Furthermore, it does not express the $\alpha 1\beta 1$ integrin receptor a result of knocking out the $\alpha 1$ subunit gene.

In the double knockout mouse there is delayed onset of proteinuria as compared to the prior art Alport mouse model. Furthermore, the animal lives nearly twice as long as Alport littermates. At about 8 weeks of age, which is the average age of death in Alport mice, the double knockout shows markedly reduced glomerular pathology. That is, as compared to Alport mice of the same age, the double knockout mouse has markedly reduced ultrastructural damage with far less GBM rarefaction and very little effacement of the podocyte foot processes. Also, attenuated accumulation of fibronectin, laminin-1, and heparan sulfate proteoglycan in the GBM occur, while accumulation of entactin and type IV collagen are unchanged, relative to Alport mice. These results indicate that there is a specific role for the $\alpha 1\beta 1$ integrin receptor in Alport renal disease pathogenesis. This is remarkable, considering that the single $\alpha 1$ integrin knockout has no obvious effect on renal physiology or function.

This mouse can be used for studying Alport syndrome, insulin dependent diabetes mellitus, and other disorders that are characterized by glomerulonephritis and/or fibrosis. This mouse can also be used for screening for agents that can be used to treat Alport syndrome and insulin dependent diabetes mellitus and other disorders that are characterized by deposition of extracellular matrix and/or fibrosis.

BRIEF DESCRIPTION OF THE FIGURES

Figure 1 illustrates the onset of proteinuria in Alport versus double mutant mice, which was studied by collecting urine from the mice at weekly intervals. Numbers indicated the age (in weeks) of the mice at the time of urine collection. A = Alport mouse; B = double mutant mouse; Mr = molecular weight standards.

Figure 2 illustrates the ultrastructural damage to the glomerular capillary loop in control and double mutant mice. Renal cortex from normal (A), Alport (B), and double mutant (C) mice was harvested at 7 weeks, embedded in epoxy resin. Ultrathin sections were stained and analyzed by transmission electron microscopy. Arrows denote foot processes. C = capillary lumen; U = urinary space. Magnification bars represent 0.5 μ m.

Figure 3 provides the results of immunofluorescence analysis of extracellular matrix proteins in normal, Alport, and double mutant mice. Frozen cryosections of renal cortex were reacted with antibodies specific for the extracellular matrix proteins indicated on the Y-axis labels. Signal was developed using the appropriate fluoresceine-conjugated secondary antibody, and images collected digitally and processed using the Cytovision Ultra software (Applied Imaging, Inc.). Arrows denote glomerular capillary loops. 4A1,2 = collagen α 1(IV) and α 2(IV) chains; Lam-1 = laminin-1; Fib = fibronectin; HSP = heparin sulfate proteoglycan; ent = entactin. α 1 +/+ = homozygous normal at the α 1 integrin gene; α 1 -/- = homozygous mutant at the α 1 integrin gene; α 3(IV) +/+ = homozygous normal at the α 3(IV) collagen gene; α 3(IV) -/- = homozygous mutant at the α 3(IV) collagen gene.

Figure 4 shows the results of northern analysis of mRNAs from total kidney during a timecourse of Alport renal disease progression. Total RNA isolated from kidneys harvested at the indicated timepoints (in weeks) was fractionated on denaturing agarose gels, blotted onto nylon, and probed with murine cDNAs encoding either TGF- β 1, or various components of the glomerular basement membrane and/or the extracellular matrix. The probes used to generate data illustrated in the panels are as follows: A, TGF- β 1; B, Collagen

α 1(IV); C, Collagen α 2(IV); D, Fibronectin; E, Entactin; F, Laminin β 1 chain; G, Laminin β 2 chain.

Figure 5 illustrates the quantitative analysis of mRNA induction during Alport renal disease progression. Following exposure to X-ray film, the membranes used to produce Figure 4 were analyzed using a BioRad GS-525 phosphorimager. Plotted values indicate fold induction of the specific mRNA in the Alport sample over those observed in the normal littermate. All bands were subtracted against the background. The specific mRNA species analyzed are denoted in the inset.

Figure 6 illustrates *in situ* hybridization analysis of specific transcripts in post-proteinuric Alport mice. Kidneys from normal littermates (A, D, G, and J) were analyzed along side those from Alport mice (B, E, H, and K). Antisense probes were specific for the NC1 domain of collagen α 1(IV) (A and B), TGF- β 1 (D and E), Fibronectin (G and H), entactin (J and K), or the laminin β 1 chain (M and N). A probe specific for bacterial β -galactosidase was used as a control for non-specific binding (C, F, I, L, and O).

Figure 7 illustrates immunoperoxidase staining for TGF- β 1 in tissue sections from normal and Alport mice. Paraffin embedded sections stained for the active form of TGF- β 1 using the immunoperoxidase detection. P = podocytes; M = mesangial cells.

Figure 8 illustrates RNase detection analysis for TGF- β 1 mRNA in normal and Alport human renal cortex. Total RNA was isolated from normal and Alport human renal cortex, and 10 μ g of each was subjected to RNase protection analysis using a radiolabeled portion of the human TGF- β 1 antisense message as a probe. The assay results in a 264 bp protected fragment. Molecular size markers are radiolabeled MSP1 cut PBR322, and appropriate fragments are denoted for comparison. N = normal; A = Alport.

Figure 9 illustrates northern blot of RNA from renal cortex of normal, Alport, α 1 integrin deficient, and mice deficient in both α 1 integrin and collagen α 3(IV). Total RNA was isolated from the renal cortex of 7 week-old mice

(littermates) with the indicated genotypes: +/+ = normal at both alleles; -/- = mutant at both alleles.

Figure 10 is a transmission electron micrograph of the GBM of a 7 week old Alport animal injected with a neutralizing antibody specific for $\alpha 1$ integrin.

5 Note the regular trilaminar appearance of the GBM and the absence of focally thickened regions. Magnification is 10,500X.

Figure 11 illustrates the affect of TGF- $\beta 1$ inhibitors on GBM ultrastructure in the 129 Sv/J Alport mouse. Animals were treated with either FK506 or the TGF- $\beta 1$ soluble receptor. Renal cortex was embedded in epoxy,
10 cut, stained with uranyl acetate and lead citrate, and analyzed by transmission electron microscopy. A = control; B = untreated Alport; C = Alport treated with FK506; D = Alport treated with the soluble TGF- $\beta 1$ receptor. Magnification is 11,000X.

Figure 12 is a scanning electron micrograph of glomeruli from treated
15 versus untreated 129 Sv/J Alport mice. Renal cortex from mice used in Figure 11 was freeze dried, cracked, stained with uranyl acetate and lead citrate, and exposed glomeruli identified and photographed using a scanning electron microscope. A = control; B = uninjected Alport; C = Alport mouse treated with the TGF- $\beta 1$ soluble receptor. Magnification is 2500X.

20 Figure 13 demonstrates the affect of drug treatment on urinary albumin in 129 Sv/J mice Alport mice. During the timecourse of drug treatment, urine was collected, lyophilized, and the equivalent of 0.5 μ l fractionated on a polyacrylamide gel. The gel was stained with coomassie blue and visualized. The first two lanes were uninjected controls, the next two (group I) were injected
25 with FK506, and the third group (group II) were injected with the soluble TGF- $\beta 1$ receptor. Numbers at the bottom represent the age of the mice at the time of urine collection in weeks.
C = control; A = Alport.

Figure 14 illustrates the affect of TGF- $\beta 1$ inhibitors on GBM
30 ultrastructure in the double knockout mice. Animals were not treated, or treated with either FK506 or the TGF- $\beta 1$ soluble receptor. Renal cortex was embedded

in epoxy, cut, stained with uranyl acetate and lead citrate, and analyzed by transmission electron microscopy. A = uninjected control; B = uninjected double knockout; C = double knockout treated with FK506; D = double knockout treated with the soluble receptor for TGF- β 1. Magnification is 8000X.

5 Figure 15 illustrates an example of normal glomerular architecture in a 10 week old double knockout mouse treated with TGF- β 1 inhibitors. Approximately 25% of glomeruli in mice treated with either TGF- β 1 inhibitor were morphologically indistinguishable from that in control animals. Animals were not treated, or treated with FK506. Renal cortex was embedded in epoxy,
10 cut, stained with uranyl acetate and lead citrate, and analyzed by transmission electron microscopy. A = uninjected control; B = double knockout treated with FK506.

 Figure 16 demonstrates the affect of drug treatment on urinary albumin in double knockout mice. During the timecourse of drug treatment, urine was
15 collected, lyophilized, and the equivalent of 0.5 μ l fractionated on a polyacrylamide gel. The gel was stained with coomassie blue and visualized. The age of the mice at the time of urine collection is indicated at the bottom of the figure (in weeks). A = uninjected double knockout; B = Double knockout injected with the soluble receptor; C = Control mouse injected with FK506; D =
20 double knockout injected with FK506.

 Figure 17 is a scanning electron micrograph of glomeruli from Alport versus double knockout mice. Renal cortex from 7 week old animals was freeze dried, cracked, stained with uranyl acetate and lead citrate, and exposed
glomeruli identified and photographed using a scanning electron microscope. A
25 = control; B = Alport; C = Double knockout.

 Figure 18 shows dual immunofluorescence staining for the laminin α 2 chain in normal and mutant mice. The glomerular basement membrane was stained in green using an entactin-specific primary antibody and an FITC-conjugated secondary antibody. Laminin α 2 chain was stained in red using a
30 Texas red-conjugated secondary antibody. Co-localization in the capillary loops results in yellow staining. Group I are glomeruli from 7 week old mice; A =

uninjected control; B = uninjected Alport; C = Alport injected with the soluble receptor; D = uninjected double knockout. Group II are glomeruli from 2 week old mice; A = control; B = Alport. The arrows denote immunostaining in the capillary loops of the glomeruli.

5 Figure 19 is a transmission electron micrograph of the GBM of a 2 week old normal versus Alport mouse. Renal cortex was embedded in epoxy, cut, stained with uranyl acetate and lead citrate, and analyzed by transmission electron microscopy. A = control; B = Alport.

 Figure 20 demonstrates the effect of TGF- β 1 inhibitors on expression, in
10 the kidney, of RNAs encoding cell matrix molecules or metalloproteinase inhibitors in normal versus Alport mice. Total RNA was isolated from kidneys of 7 week old normal (C) or Alport (A) mice, that were either treated with FK506 (I), or not treated (NI). RNAs were fractionated on denaturing agarose gels, and analyzed by hybridization to radiolabeled probes encoding either
15 extracellular matrix molecules or metalloproteinase inhibitors. Following hybridization, membranes were washed and exposed to X-ray film. Probes used are indicated to the left of the panels. α 1(IV) = collagen α 1(IV); fn = fibronectin; ent = entactin; Timp2 = metalloproteinase inhibitor Timp-2; Timp3 = metalloproteinase inhibitor Timp-3.

20 Figure 21 demonstrates the effect of TGF- β 1 inhibitors on expression, in the kidney, of RNAs encoding cell matrix molecules or metalloproteinase inhibitors in normal versus double knockout mice. Total RNA was isolated from kidneys of 10 week old normal (C) or double knockout (Dko) mice, that were
25 either treated with FK506 (I), the TGF- β 1 soluble receptor (II), or not treated (NI). RNA's were fractionated on denaturing agarose gels, and analyzed by hybridization to radiolabeled probes encoding either extracellular matrix molecules or metalloproteinase inhibitors. Following hybridization, membranes were washed and exposed to X-ray film. Probes used are indicated to the left of
30 the panels. α 1(IV) = collagen α 1(IV); fn = fibronectin; ent = entactin; Timp2 = metalloproteinase inhibitor Timp-2; Timp3 = metalloproteinase inhibitor Timp-3.

Figure 22 illustrates the inhibition of matrix accumulation in the tubulointerstitium of double knockout mice using TGF- β 1 inhibitors. Kidneys from ten week old normal or double knockout mice were embedded in plastic, and 1 μ M sections were stained using the Jones silver methenamine method. A = normal kidney; B = double knockout kidney, uninjected; C = double knockout kidney treated with FK506; D = double knockout kidney treated with the TGF- β 1 soluble receptor.

Figure 23 illustrates the inhibition of collagen type I accumulation in the tubulointerstitium of double knockout mice using TGF- β 1 inhibitors. Kidneys from ten week old normal or double knockout mice were embedded in plastic, and 1 μ M sections were immunostained using antibodies specific for collagen type I. Staining was developed using the streptavidin AEC staining kit from Vector laboratories.

A = normal kidney; B = double knockout kidney, uninjected; C = double knockout kidney treated with FK506; D = double knockout kidney treated with the TGF- β 1 soluble receptor.

Figure 24 illustrates the inhibition of fibronectin accumulation in the tubulointerstitium of double knockout mice using TGF- β 1 inhibitors. Kidneys from ten week old normal or double knockout mice were embedded in plastic, and 1 μ M sections were immunostained using antibodies specific for fibronectin. Staining was developed using the streptavidin AEC staining kit from Vector laboratories. A = normal kidney; B = double knockout kidney, uninjected; C = double knockout kidney treated with FK506; D = double knockout kidney treated with the TGF- β 1 soluble receptor.

DETAILED DESCRIPTION OF THE PREFERRED EMBODIMENTS

The present invention provides treatment methods that attack the mechanism of renal disease (i.e., kidney disease), one that could substantially slow the onset of and/or progression of disease conditions, such as glomerulonephritis and renal fibrosis. It is believed that the methods of the present invention could even reverse such conditions. In particular, the invention

provides methods for the treatment of kidney disease associated with the presence of or an increased risk for developing glomerulonephritis and renal fibrosis in the kidney glomeruli, such as occurs in mesangial proliferative glomerulonephritis, membrano proliferative glomerulonephritis, crescentic glomerulonephritis, diabetic nephropathy, and renal interstitial fibrosis. 5
Glomerulonephritis involves glomerular damage typically associated with thickening, thinning, and/or splitting irregularities in the GBM. This can culminate in the common pathway of tubulointerstitial fibrosis. These conditions are typically characterized by the appearance of myofibroblasts and the accumulation of matrix (including collagen type I, fibronectin, laminin, and 10 collagene type IV) in the tubulointerstitium. The effectiveness of the therapeutic agents used in the methods of the present invention can be determined by evaluating one or more of these characteristics.

The invention also provides a mouse model for the study of methods and 15 the screening of agents for treating patients with kidney disease associated with the presence of, or an increased risk for, developing an accumulation of extracellular matrix generally, and particularly within the kidney glomeruli and the tubulointerstitium. Thus, in one embodiment, the present invention provides a mouse model for Alport syndrome. This mouse model includes an inactivated 20 $\alpha 1\beta 1$ integrin receptor in combination with an inactivated collagen (type IV) molecule. In a preferred embodiment, the collagen (type IV) molecule is inactivated through disruption of expression of the $\alpha 3$ subunit of collagen (type IV). As a result, the mouse does not incorporate the collagen $\alpha 3(\text{IV})$, $\alpha 4(\text{IV})$, or $\alpha 5(\text{IV})$ chains into the GBM.

25 This mouse model can be used in methods for testing agents to treat renal dysfunction, as it occurs in Alport syndrome, insulin dependent diabetes mellitus, and other renal diseases where early disease is characterized by the expansion of the mesangial matrix and mesangial cell proliferation in association with glomerular basement membrane damage, characterized by basement 30 membrane thickening, thinning, splitting, and effacement of the podocyte foot processes, or any combination thereof.

In a preferred embodiment, the invention provides inhibitors to block or otherwise inactivate the function of the $\alpha 1\beta 1$ integrin receptor as a method for delaying the onset of (as measured by the appearance of albumin in the urine) or slowing the progression of (as measured by the rate at which the level of serum albumin in the urine increases) or even reversing (as measured by the rate at which the level of serum albumin in the urine increases) glomerulonephritis and/or fibrosis (as manifest by the appearance of myofibroblasts and the accumulation of extracellular matrix, including laminin, fibronectin, collagen type I, and collagen type IV in the tubulointerstitium) in the progression of glomerular disease. A variety of agents, synthetic or natural, can be used, which are described in greater detail below.

In yet another embodiment, the invention is directed to the role of TGF- $\beta 1$ in Alport renal disease pathogenesis and other such kidney diseases. A pronounced increase in mRNA levels for TGF- $\beta 1$ following the onset of proteinuria is observed in the mouse models used herein. *In situ* hybridization indicates that the podocytes, which produce little to no mRNA for TGF- $\beta 1$ prior to the onset of proteinuria, express an abundance of mRNA for TGF- $\beta 1$ following the onset of proteinuria up until end stage renal failure. Activation of mRNAs encoding fibronectin, COL4A1 and COL4A2, and entactin are observed at about the same time. Therefore, methods for diminishing the level of TGF- $\beta 1$ is another mechanism for treating renal conditions such as glomerulonephritis and/or fibrosis. The effects of inhibiting TGF- $\beta 1$ activity can be measured by determining the time point of appearance (the onset) and rate of increase of albumin in urine and/or appearance of myofibroblasts (in the tubulointerstitium) and/or accumulation of extracellular matrix molecules in the GBM and tubulointerstitium.

In another embodiment, through the use of TGF- $\beta 1$ inhibitors in Alport mice deficient in $\alpha 1$ integrin, the invention is directed to the synergism of a combination treatment of $\alpha 1\beta 1$ integrin inhibitors and TGF- $\beta 1$ inhibitors at slowing the onset and progression of glomerulonephritis, and/or preventing fibrosis.

Mouse Model

An important aspect of managing patients with Alport syndrome and other diseases associated with progressive glomerular damage associated with thickening, thinning, or splitting irregularities in the GBM and culminating in the common pathway of tubulointerstitial fibrosis as characterized by the appearance of myofibroblasts and the accumulation of matrix (including collagen type I, fibronectin, laminin, and collagen type IV) in the tubulointerstitium is determining the cause and/or mechanism of the disease progression. For example, while mutations in the collagen $\alpha 3(\text{IV})$ or $\alpha 4(\text{IV})$ genes result in autosomal recessive forms of Alport syndrome, and mutations in the $\alpha 5(\text{IV})$ gene results in the X-linked form of the disease, these mutations themselves do not "cause" progressive renal failure. Instead, the absence of collagen $\alpha 3(\text{IV})$, $\alpha 4(\text{IV})$ or $\alpha 5(\text{IV})$ appears to result in the persistence of the embryonic-like GBM comprised of the $\alpha 1(\text{IV})$ and $\alpha 2(\text{IV})$ collagen chains. This embryonic-like GBM is a suitable glomerular filter for about the first decade of life in humans (or about the first three weeks in the mouse model). However, after this time the embryonic-like GBM does not appear to function effectively. For example, in one patient with Alport syndrome, ultrastructural studies of the GBM of a 9-year old patient with Alport syndrome revealed a relatively normal ultrastructure (Cangiotti et al., *Nephrol. Dial. Transplant.*, 11:1829-1834, 1996). At age 18, however, the GBM ultrastructure of the same patient indicated advanced Alport glomerulonephritis.

In Alport syndrome the basement membrane in humans is relatively normal until between five and ten years of age when the loss of basement membrane integrity can be monitored by a progressive increase in albumin in the urine. Biopsy studies have confirmed that the basement membrane ultrastructure is normal in pre-proteinuric Alport patients. Ultrastructurally, GBM disease is evidenced by an irregular thickening and thinning of the GBM. Splitting of the membrane is thought to account for microhematuria (i.e., small numbers of erythrocytes detectable in the urine) observed along with proteinuria.

Little is known regarding the mechanism of Alport renal disease onset and progression; however, it has been speculated that the accumulation of GBM components and rarefication of the GBM might be due to increased susceptibility of the membrane to proteolysis, and/or increased synthesis of matrix molecules due to alterations in the normal regulatory pathways.

Thus, there has been a need for a model for Alport syndrome because of the limitations inherent to the study of human specimen. Humans display a range of severity in the progression of the disease, presumably due to differences in genetic backgrounds. Meaningful studies that address the molecular nature of disease onset and progression are logistically impossible in humans, hampering progress in Alport renal disease research.

A mouse model for autosomal Alport syndrome was produced by targeted mutagenesis of the gene encoding the type IV collagen $\alpha 3(\text{IV})$ chain (Cosgrove et al., *Genes Devel.*, 10:2981-2992, 1996). The animal model developed a progressive glomerulonephritis. Ultrastructural changes in the GBM were observed as early as one week of age. This mouse is referred to herein as the "Alport" mouse.

Also, a mouse was produced by targeted mutagenesis of the gene encoding the $\alpha 1$ integrin receptor subunit (Gardner et al., *Dev. Biol.*, 175: 301-313, 1996). This integrin subunit forms a heterodimer with the integrin $\beta 1$ subunit to form the biologically active $\alpha 1\beta 1$ integrin heterodimer, which is found on the surface of mesangial cells in the renal glomerulus. The integrin $\alpha 1\beta 1$ receptor is the only integrin receptor found in the mesangial matrix, where it is exclusively localized. Aside from altered adhesion of fibrocytes to collagen matrices, the knockout mouse has no obvious phenotype. It develops normally, is fertile, and lives a normal life span. There is no renal insufficiency, and no apparent differences in molecular composition or ultrastructure of the glomerulus in these mice. Because the $\alpha 1\beta 1$ heterodimeric integrin receptor is the only integrin receptor identified on the surface of mesangial cells in the renal glomerulus, it was surprising that the absence of this receptor had no affect on

normal renal development and/or function. This suggests that it is either not required, or that redundant pathways can compensate for its absence.

The present invention provides a new double knockout (i.e., double mutant) mouse model. This was developed by crossing the $\alpha 1$ knockout mouse strain with the collagen $\alpha 3(\text{IV})$ knockout strain (Alport mouse) to produce mutants defective in both the integrin $\alpha 1$ receptor subunit gene and the collagen $\alpha 3(\text{IV})$ gene. Although the absence of the $\alpha 1\beta 1$ integrin receptor apparently does not play a role in normal renal development and function, because the mesangial matrix is the site of synthesis for the metalloproteinases and cytokines such as TGF- $\beta 1$ and the early stages of Alport glomerulonephritis involve mesangial cell proliferation and expansion of the mesangial matrix, it is believed that the $\alpha 1\beta 1$ integrin receptor might have a specific role in renal pathogenesis. Indeed, studies of the integrin $\alpha 1$ collagen $\alpha 3(\text{IV})$ double knockout are particularly unique and important. The following discussion describes many of the characteristics of the double knockout mouse of the present invention.

A good overall assessment of the integrity of the renal filter is proteinuria (i.e., the presence of an excess of serum proteins in the urine). As illustrated in Figure 1, the onset of proteinuria in the double knockout was delayed by at least a week, and peaked at about 9 weeks to about 9.5 weeks versus about 6 weeks to about 6.5 weeks in littermates that were Alport (i.e., lacking the collagen $\alpha 3(\text{IV})$ gene, but containing the $\alpha 1$ integrin subunit gene). The onset and rate of increase of proteinuria (i.e., the presence of serum albumin in the urine) is a good measure for evaluating the effectiveness of the methods of the present invention. The serum albumin levels can be measured by either by gel electrophoresis and coomassie blue staining (running the equivalent of 1 microliter of urine) or commercially available stick tests. The mean age of death due to renal failure is about 8 to about 9 weeks in Alport mice regardless of whether these mice are of the 129 Sv/J or 129 Sv backgrounds (at least ten mice were allowed to progress to end stage for each genetiv background to establish this point). The double knockouts live to an average of about 15 weeks to about 16.5 weeks of age.

Therefore, removing the $\alpha 1\beta 1$ integrin receptor had a marked affect on Alport renal disease onset and progression. Further, mice without the $\alpha 1\beta 1$ receptor had improved glomerular function as compared to the other mice tested. In animals that did not express the $\alpha 3(IV)$ gene and were heterozygous for the $\alpha 1$ knockout mutation, there was an intermediate improvement in glomerular function and disease progression illustrating that the $\alpha 1$ integrin had a dose dependent effect on Alport renal disease progression (i.e., reducing the $\alpha 1$ integrin expression by half provided a protective effect that is in between the Alport mouse and the double knockout). This intermediate protective effect in Alport animals heterozygous for the $\alpha 1$ integrin mutation illustrates that partially inhibiting the $\alpha 1\beta 1$ integrin receptor provides useful benefits. This is a significant finding as it applies to therapies involving inhibition of the $\alpha 1\beta 1$ integrin receptor when used in humans.

Transmission electron microscopic analysis was performed on kidneys from 7 week old mice that were either normal at both alleles (control), null at collagen $\alpha 3(IV)$ and normal at $\alpha 1$ integrin (Alport), or null at both collagen $\alpha 3(IV)$ and $\alpha 1$ integrin (double knockout). This time point was chosen since the Alport mice at this age are approaching end stage. The panels chosen for Figure 2 are representative of at least 5 different glomerular fields. As illustrated in Figure 2, the glomerular capillary loop of the normal mouse (Figure 2A) had a trilaminar basement membrane with uniform thickness and regular foot processes (the foot processes in all three panels are denoted by arrows). The capillary loop of the Alport mouse (Figure 2B) showed rarefied basement membrane with focal thickening and thinning (characteristic of advanced disease). The foot processes were swollen, appearing fused, a property believed to affect renal filtration efficiency. In the double knockout (Figure 2C), the basement membrane was markedly less affected than that of the Alport mouse (Figure 2B). While the basement membrane was thinner than that of the control, it was much less rarefied, and the foot processes of the podocytes appeared largely normal. In the Alport mouse, about 40% of the glomeruli were fibrotic, while only 5% were fibrotic in the double mutant.

Immunofluorescence analysis was performed using frozen renal cortex taken from the same animals used in Figure 2. The tissue was reacted with antibodies specific for proteins known to accumulate in the GBM as a function of Alport renal disease progression. The results in Figure 3 illustrate that the distribution of collagen COL 4A1 ($\alpha 1(IV)$) and 4A2 ($\alpha 2(IV)$) chains was the same for both the Alport glomerulus and that of the double mutant. In both cases, the capillary loops (denoted in all panels of Figure 3 by arrows) and the mesangial matrix were positive (Figure 3B, C). Laminin-1 showed marked accumulation in the GBM of the Alport mouse compared to the control (Compare Figure 3D with Figure 3E), however in the double mutant (Figure 3F), accumulation of laminin-1 was markedly attenuated relative to that in Alport glomeruli (Figure 3E). Fibronectin normally localizes exclusively in the mesangial matrix, but it was found to localize to the GBM as well as the mesangial matrix in the Alport mice (Figure 3H). Surprisingly, in the double mutant, accumulation of fibronectin in the capillary loops is not observed (Figure 3I). This result was highly reproducible. In contrast, staining for heparin sulfate proteoglycan showed attenuated staining in the mesangial matrix of the double mutant (Figure 3L) when compared to either the control (Figure 3J) or the Alport mouse (Figure 3K). Accumulation of entactin in the GBM was observed in both the Alport and double mutant samples, with no discernible difference between the two (Figures 3N and 3O).

Combined, these data illustrate that the $\alpha 1$ null mutation in the double mutant results in slowing Alport renal disease progression. This is clear at both the physiologic (delayed onset of proteinuria as shown in Figure 1) and ultrastructural (reduced GBM damage and foot process effacement as shown in Figure 2) levels. The immunofluorescence studies provided in Figure 3 illustrate that elimination of the $\alpha 1\beta 1$ integrin receptor results in specific changes in the accumulation of extracellular matrix components in both the GBM and the mesangial matrix. Thus, the present invention involves treatment methods wherein the $\alpha 1\beta 1$ integrin receptor binding site on the surface of a kidney cell is blocked. Such treatment methods are described in greater detail below.

Furthermore, Figure 9 shows that, while the cytokine TGF- β 1 is induced in the Alport mouse, it is not induced in Alport mice that harbor the α 1 integrin mutation as well. Thus, in the absence of α 1 β 1 integrin, TGF- β 1 induction is not observed, which accounts for a decrease in accumulation of matrix in the glomerular basement membrane, and thus, a significant decrease in the rate at which the renal disease progresses. This role of TGF- β 1 in renal disease is discussed in greater detail in the following section.

Role of TGF- β 1

The data herein clearly establishes that TGF- β 1 is induced in a specific glomerular cell type (the podocytes) in the mouse models used herein. The induction of TGF- β 1 mRNA is mirrored by the induction of the genes encoding the matrix molecules known to accumulate in the glomerular basement membrane as a function of progressive glomerulonephritis in the model (e.g., laminin, fibronectin, entactin, and type IV collagen). Furthermore, the data herein shows that TGF- β 1 is induced in human Alport renal cortex. This supports the validity of the animal model in its ability to mimic what is happening in the human Alport kidney.

To demonstrate the role of TGF- β 1, total RNA was isolated from kidneys of Alport animals and probed with radiolabeled probes specific for either the α 1(IV) or α 2(IV) collagen chains, entactin, the laminin β 1 or β 2 chain, fibronectin, or TGF- β 1. The results in Figure 4 illustrate that the mRNAs for all of these proteins with the exception of laminin β 1 are induced following the onset of proteinuria in the Alport mouse model. Northern blots for this same timecourse were also performed for laminin α 1, laminin β 2, laminin γ 1, heparin sulfate proteoglycan core protein, and the collagen α 4(IV), and α 5(IV) chains. No significant differences in mRNA levels for these other basement membrane proteins were apparent when comparing the control to the mutant.

The results of the northern analyses were analyzed to directly quantify the relative changes in specific mRNA expression during the timecourse. Figure 5 illustrates that induction of the specific mRNA levels is first apparent at six

weeks of age. By 8 weeks, mRNA levels peak, with the mRNAs encoding TGF- β 1 and fibronectin induced 6.6- and 9.4-fold over that of control mice, respectively. The mRNA levels for collagen α 1(IV), α 2(IV), and entactin were all about 3-fold induced by week 8. In contrast, no significant changes in
5 mRNAs encoding the laminin β 1 and β 2 chains, as determined by these same total RNA northern blots, were observed at any point in renal disease progression.

The glomeruli comprise only a small percentage of the total mass of the kidney. Individual cell types within the glomeruli comprise an even lesser
10 percentage. Northern blots of total kidney RNA is therefore not likely to detect induction of messages that might be specific to glomeruli, or to a particular glomerular cell type. To examine whether the mRNAs encoding TGF- β 1, or the different basement membrane components were induced in a particular glomerular cell type, *in situ* hybridization was performed using digoxigenin-
15 labeled antisense probes specific for the mRNAs. The results are shown in Figure 6. In normal mice, the transcripts for TGF- β 1 (Figure 6D), fibronectin (Figure 6G) and laminin β 1 (Figure 6M) localize exclusively to the mesangial cells, while in the Alport mice, these same transcripts (Figure 6 E, H, and N, respectively) clearly localize to the podocytes (the ring of cells on the outside of
20 the glomerulus) illustrating gene activation in this glomerular cell type. Podocyte activation of collagen α 1(IV) is also evident (compare Figure 6B with 6A). Activation of genes encoding matrix proteins in glomerular podocytes could result in changes in GBM composition.

TGF- β 1 protein data based on immunoperoxidase detection using
25 antibodies specific for the active isoform of the cytokine corroborate data obtained by *in situ* hybridization analysis for TGF- β 1 messenger RNA. The data shown in Figure 7 illustrates that elevated expression of TGF- β 1 messenger RNA in the podocytes translates into elevated protein.

Since the data for TGF- β 1 was acquired using a mouse model RNase
30 protection analysis was performed to determine if mRNA levels for the cytokine are also elevated in human renal cortex from Alport versus control patients.

Data in Figure 8 illustrate a 3-4 fold elevation of TGF- β 1 messenger RNA in human Alport renal cortex relative to control. This proves that the cytokine is also overexpressed in human Alport kidneys. Thus, inhibiting the activity of TGF- β 1 provides a reasonable treatment protocol for Alport Syndrome, particularly for limiting, and preferably even preventing, matrix accumulation in the GBM.

As discussed above, Figure 9 shows that, while TGF- β 1 is induced in the Alport mouse, it is not induced in double knockout mice that harbor the α 1 integrin mutation as well. Thus, in the absence of α 1 β 1 integrin, TGF- β 1 induction is not observed, which accounts for a decrease in accumulation of matrix in the glomerular basement membrane, and thus, a significant decrease in the rate at which the renal disease progresses.

Significantly, blocking (or otherwise inactivating) both the integrin α 1 β 1 receptor and inhibiting TGF- β 1 is synergistic in attenuating renal disease (particularly Alport renal disease) onset, progression, and/or reversal. This synergistic effect is demonstrated using, as examples, two different agents that block TGF- β 1 activity in three different ways. Both were studied to assure that the results were due to inhibiting TGF- β 1 activity, rather than a side effect of drug treatment.

The first example is a drug produced by Fujisawa Pharmaceutical Co., Ltd., Osaka, Japan, referred to as tacrolimus or FK506. This drug is commonly used as an immunosuppressant to prevent rejection following organ transplantation. It works by inhibiting a critical subunit of the T-cell receptor called calcineurin, which is a serine threonine phosphatase, and a critical part of T-cell receptor signal transduction. As reviewed recently (Crabtree, *Cell*, 96:611-614, 1999), calcineurin is a subunit of a variety of receptors. One of these receptors was recently reported to be that for TGF- β 1 (Wang et al., *Cell*, 86:435-444, 1996). The drug FK506 was tested as a TGF- β 1 inhibitor. Thus, treating mice with the appropriate dose of FK506 will inhibit TGF- β 1 type I/type II receptor signal transduction.

Since FK506 has other biological effects besides inhibiting TGF- β 1 (potent immunosuppression via T-cell receptor inhibition being the most notable), a second TGF- β 1 inhibitor was evaluated. This second inhibitor is an experimental drug under development by Biogen Inc., Cambridge, MA. This drug is a competitive inhibitor of the cytokine, soaking up the active cytokine as an inactive soluble receptor complex. It is a soluble chimeric TGF- β RII/IgG1 murine fusion protein (see, International Publication WO 98/48024). Twenty five micrograms of the inhibitor were injected into mice through the tail vein twice weekly in the described experiments.

Since the mode of activity and the potential side effects of FK506 and the soluble TGF- β 1 inhibitor of Biogen are so different, observations made using the animal model systems that are consistent with both drugs are concluded to be due to the inhibition of TGF- β 1 activity.

Two types of experiments were performed. Both agents were tested using the 129 Sv/J mouse model (the Alport mouse) to examine the biological effects of TGF- β 1 inhibition by itself. Second, both agents were tested in the double knockout mouse model to examine the biological effects of α 1 β 1 integrin inhibition combined with TGF- β 1 inhibition. In all cases, the data presented herein was repeated at least three times with a high degree of consistency.

When TGF- β 1 is inhibited in the Alport mouse model, there are some beneficial effects. There is overall improvement of basement membrane morphology, however, significant foot process effacement is still observed. Thus, TGF- β 1 can improve GBM morphology by reducing the rate of matrix accumulation, but it has no significant affect on the mechanisms underlying foot process effacement. This means that TGF- β 1 inhibitors given alone, although provide improvement, are not likely to succeed in improving all characteristics of Alport Syndrome or other such disorders. In double knockout mice, by 10 weeks of age, most of the foot processes look normal, however there is significant matrix accumulation in the GBM. If you treat these same animals with any of the TGF- β 1 inhibitors used starting at 4 weeks of age, and harvest tissues at 10 weeks of age, about 30% of glomeruli are ultrastructurally

indistinguishable from those of normal mice. Thus, significant improvement in treatment protocols described herein can be achieved using TGF- β 1 inhibitors in combination with α 1 β 1 integrin receptor inhibitors.

Northern blot data on specific mRNAs from kidneys taken from either Alport mice or double knockouts treated with either of the TGF- β 1 inhibitors, demonstrate that there are distinct differences between how either TGF- β 1 or the α 1 β 1 integrin knockout mutation affects expression of these messages that encode either matrix molecules that accumulate in the GBM. The mRNAs encoding metalloproteinases (including matrix metalloproteinase 2(MMP-2)) and their corresponding inhibitors (including TIMP-2 and TIMP-3), that are believed to modulate the rate of turnover of molecules that comprise the GBM, are also differentially affected in Alport mice versus double knockout mice treated with either of the TGF- β 1 inhibitors. Specifically, Timp-3, which is expressed at very high levels in normal mice is suppressed in the both Alport mice and double knockouts. Treatment with double knockout mice with TGF- β 1 inhibitors prevents suppression of TIMP-3, restoring the mRNA to levels comparable to those observed in control mice (Figure 21).

Along these same lines, laminin α 2 expression is normally tightly restricted to the mesangial matrix. The deposition of laminin α 2 is the earliest molecular change identified in association with Alport GBM disease onset, showing up at the same time as basement membrane thickening is first detected. Deposition of laminin α 2 in the GBM of double knockout mice is not observed even at 7 weeks of age (Figure 18, Group 1D). Administration of TGF- β 1 inhibitors to the SV/J Alport mice does not inhibit deposition of laminin α 2 (Figure 18, Group 1C). This underscores another difference in how α 1 β 1 integrin versus TGF- β 1 functions in slowing disease progression, substantiating with hard evidence why a combination treatment provides synergistic benefits.

It is believed that the failure of TGF- β 1 to inhibit effacement of the podocyte foot processes is directly linked to the observations regarding laminin α 2. The laminins form heterotrimers consisting of an alpha, beta, and gamma

chain. In the basement membrane, they crosslink with one another to form a sheet-like superstructure that is an integral part of the basement membrane. The laminins are known to interact with integrin receptors, and play important roles in differentiation and maintenance of tissue function. In normal mice, the GBM contains predominantly laminin-111, a heterotrimer of $\alpha 5$, $\beta 2$, and $\gamma 1$ chains. This laminin is known to bind with high affinity to the integrin $\alpha 3\beta 1$ receptor on the surface of podocytes. Many believe that this interaction plays a key role in maintaining the complex cytoskeletal architecture that forms the foot processes. Laminin heterotrimers that contain the $\alpha 2$ chain (laminin-2 and laminin-4) do not bind to $\alpha 3\beta 1$ integrin. Thus the presence of the laminin-2 chain in the GBM might result in the observed foot process effacement by inhibiting the binding of the $\alpha 3\beta 1$ integrin to its normal substrate (laminin-111). As mentioned, in the double knockout, the deposition of laminin $\alpha 2$ is inhibited, which correlates well with the maintenance of foot processes in this mouse strain.

Additional observations relate to the issue of interstitial fibrosis. Interstitial fibrosis occurs late in Alport syndrome progression. In the 129 Sv/J Alport mouse model, little fibrosis is observed prior to 7 weeks, with a mean age of death at 8 weeks. In the double knockout, however, onset of fibrosis is at 8 to 9 weeks, and progresses until the mean age of death at 15 weeks. Thus, the double knockout is an excellent model for the study of fibrosis. There is a significant course of fibrosis in the double knockout mouse, and this can be largely prevented by using TGF- $\beta 1$ inhibitors.

Treatment Methods

In one aspect, the invention relates to the use of inhibitors (e.g., blocking agents) to block or otherwise inactivate the function of the $\alpha 1\beta 1$ integrin receptor as a method for delaying the onset (as measured by the appearance of detectable levels of serum albumin in the urine, using either a commercially available stick test or gel electrophoresis and gel staining procedure) slowing the progression of (as determined by measuring the rate at which albumin levels increase in the urine as a function of time, as measured above), or even reversing

glomerular disease, particularly progressive glomerular nephritis and/or fibrosis. These include, for example, at least 9-mer peptides from proteins that bind to the $\alpha 1\beta 1$ integrin receptor, such as, but not limited to, laminin, type IV collagen, fibronectin, and entactin. Small molecules binding within the receptor/ligand site of the $\alpha 1\beta 1$ receptor can be created based on protein/ $\alpha 1\beta 1$ integrin receptor studies. Antibodies and antibody fragments that specifically bind to the binding site of the $\alpha 1\beta 1$ integrin receptor can be used in this invention. These antibodies or antibody fragments include polyclonal, monoclonal, anti-idiotypic, animal-derived, humanized and chimeric antibodies.

10 An agent (artificial ligand) that blocks the binding site for the $\alpha 1\beta 1$ integrin receptor can be used in the methods of the present invention. Examples of such agents include, but are not limited to, a neutralizing antibody, peptide, proteolytic fragment, or the like. Such agents are believed to block signal transduction through the receptor. Effectiveness of such treatments can be determined by evaluating the downstream effects on gene expression of, for example, TGF- $\beta 1$, fibronectin, laminin chains, etc., by the morphometric changes in the glomerular basement membranes, and/or by improvement in the glomerular seive as evidenced by a decrease in the rate of onset and progression of proteinuria.

20 An antibody that neutralizes $\alpha 1\beta 1$ integrin function as is provided in the examples and in Figure 10. As an example to illustrate that a soluble agent capable of blocking the interaction of $\alpha 1\beta 1$ integrin with its ligand would produce the same effects on renal disease pathogenesis as the $\alpha 1$ gene knockout mutation, the antibody described in Fabbri et al., *Tissue Antigens*, 48:47-51, 25 1996 was obtained. This antibody was injected (400 ng/injection, three times weekly, intraperitoneally), and shown to inhibit glomerular basement damage in the Alport mouse model, in much the same manner as was observed in the double mutant.

In another aspect, the invention relates to the use of agents that decrease 30 the level of TGF- $\beta 1$ as a method for slowing the accumulation of matrix in the progression of glomerular disease, particularly progressive glomerulonephritis.

Thus, such agents can be used to treat Alport syndrome patients and patients with insulin dependent diabetes mellitus, as well as others suffering from particularly progressive glomerulonephritis, or any such disorder characterized by expansion of the mesangial matrix, proliferation of the mesangial cells, deposition of matrix in the glomerular basement membrane resulting in thickening, thinning, splitting, or some such irregularity, effacement of the podocytes foot processes, or some combination of the above listed manifestations, all of which culminate in the common pathway of renal fibrosis (the prevention for which the combination therapy of $\alpha 1\beta 1$ integrin inhibitors and TGF- $\beta 1$ inhibitors is particularly effective). To this end, antisense therapies, as described in the art, can be used to block expression of TGF- $\beta 1$ or $\alpha 1\beta 1$ integrin receptor protein. A variety of agents, synthetic or natural, can be used.

An agent that neutralizes the ability of TGF- $\beta 1$ cytokine to interact with its receptor can be used in the methods of the present invention. Examples of such agents include, but are not limited to, a neutralizing antibody, a calcineurin inhibitor (i.e., microlide) such as those disclosed in U.S. Patent No. 5,260,301 (Nakanishi et al.) (e.g., FK506 or tacrolimus and structurally related compounds), a soluble receptor such as the soluble recombinant TGF- $\beta 1$ receptor disclosed in International Publication WO 98/48024 (Biogen Inc.) (e.g., a soluble chimeric TGF- β RII/IgG1 fusion protein), a peptide fragment of the receptor, or some such fragment that has the ability to irreversibly (or stably) bind with the cytokine and inhibit its ability to bind with its receptor. In addition, an agent that inhibits the ability of TGF- $\beta 1$ to transduce signals to the nucleus can be used. Effectiveness of such treatments can be determined by evaluating the downstream effects on gene expression of, for example, fibronectin, laminin chains, etc., by the morphometric changes in the glomerular basement membranes, and/or by improvement in the glomerular seive as evidenced by a decrease in the rate of onset and progression of proteinuria.

In one example, FK506 or cyclosporin A can be used to inhibit the calcineurin portion of the TGF- $\beta 1$ receptor, inhibiting signal transduction through the receptor complex, as has been disclosed for some other kidney

diseases (Wang *et al.*, *Cell* 86:435-444, 1996 and Miller *et al.*, *Endocrinol.*, 3:1926-1934, 1989), and thereby inhibiting (through an unknown mechanism) the onset of proteinuria, as has been described for the same kidney diseases (Callis *et al.*, *Pediatr. Nephrol.*, 6:140-144, 1992). No such recommendations
5 have been made for Alport syndrome, diabetes mellitus or for diseases associated with an increase in extracellular matrix in the kidney glomeruli, prior to the present invention.

In particular, the present invention illustrates the effect of a combination therapy of inhibiting the $\alpha 1\beta 1$ integrin receptor and TGF- $\beta 1$ having a synergistic
10 effect at preventing both the glomerular disease and the fibrosis associated with Alport syndrome. It would follow that other diseases that involve the expansion of the mesangial matrix, the proliferation of mesangial cells, progressive basement membrane damage as manifest by one or more of GBM thickening, thinning, splitting, effacement of the podocyte foot processes, or any
15 combination of the above will also benefit from this treatment. In addition, we illustrate the effectiveness of the combination treatment in preventing fibrosis of the tubulointerstitium in Alport syndrome. Fibrosis is a common pathway, the mechanism for which is believed to be identical for all renal diseases for which fibrosis becomes involved. The effectiveness of this combination therapy in
20 treating fibrosis, therefore, should be applicable to all forms of renal fibrosis, regardless of the underlying cause that initiated the pathway leading to fibrosis.

The agents used in the methods of the present invention can be administered in combination with a pharmaceutically acceptable carrier. The agents of the present invention are formulated in pharmaceutical compositions
25 (i.e., formulations) and then, in accordance with the method of the invention, administered to a mammal, such as a human patient, in a variety of forms adapted to the chosen route of administration. The formulations typically include those suitable for parental (including subcutaneous, intramuscular, intraperitoneal, and intravenous) administration or other methods that allow for
30 stability of the agents.

Suitable pharmaceutically acceptable carriers can be in the form of liquids, semisolids, finely divided solids, or combinations thereof. Formulations suitable for parenteral administration conveniently comprise a sterile aqueous preparation of the agent, or dispersions of sterile powders comprising the agent, which are preferably isotonic with the blood of the recipient. Isotonic agents that can be included in the liquid preparation include sugars, buffers, and sodium chloride. Solutions of the agent can be prepared in water, optionally mixed with a nontoxic surfactant. Dispersions of the agent can be prepared in water, ethanol, a polyol (such as glycerol, propylene glycol, liquid polyethylene glycols, and the like), vegetable oils, glycerol esters, and mixtures thereof. The ultimate dosage form is sterile and stable under the conditions of manufacture and storage. The necessary fluidity can be achieved, for example, by using liposomes, by employing the appropriate particle size in the case of dispersions, or by using surfactants. Sterilization of a liquid preparation can be achieved by any convenient method that preserves the bioactivity of the agent, preferably by filter sterilization. Preferred methods for preparing powders include vacuum drying and freeze drying of the sterile injectible solutions. Subsequent microbial contamination can be prevented using various antimicrobial agents, for example, antibacterial, antiviral and antifungal agents including parabens, chlorobutanol, phenol, sorbic acid, thimerosal, and the like. Absorption of the agents over a prolonged period can be achieved by including agents for delaying, for example, aluminum monostearate and gelatin.

In addition to the aforementioned ingredients, the formulations of this invention may further include one or more accessory ingredients including diluents, buffers, binders, disintegrants, surface active agents, thickeners, lubricants, preservatives (including antioxidants) and the like. The formulations may be conveniently presented in unit dosage form and may be prepared by any of the methods well known in the art of pharmacy.

Useful dosages (i.e., effective amounts that provide a desired effect) of the agents described herein can be determined by comparing their *in vitro* activity and the *in vivo* activity in animal models. Methods for extrapolation of

effective dosages in mice, and other animals, to humans are known in the art. For example, doses of about 150 mg per kg to about 300 mg per kg twice daily of agent for intravenous injection. Suitable doses to be administered are, in general, those which are sufficient to produce a desired effect, such as by
5 inducing a demonstrable increase of phase II enzyme expression, or other characteristic described herein.

EXAMPLES

10 In the examples a description of two different animal models is provided. The first is an "Alport" mouse model which does not express collagen $\alpha 3(\text{IV})$ and is normal for $\alpha 1$ integrin and is described in Cosgrove et al., *Genes Dev.*, 10:2981-2992, 1996, and the second, which is referred to as the "double
15 knockout" mouse, which was derived by crossing the Alport mouse with a mouse that was null for the $\alpha 1$ integrin gene. There are differences between the Alport mouse and the double knockout that serve to illustrate the efficacy of blocking $\alpha 1\beta 1$ integrin function on slowing glomerular disease. These effects are described in detail.

The Alport mouse is in a 129 Sv/J pure genetic background, and the
20 double knockout mouse is in a 97.5% pure 129 Sv background. An exception for this are the animals that were used to generate Figures 4, 5, and 6. These experiments were performed early in the history of the Alport mouse model, and thus were generated by crossing the chimeric males with C57 Bl/6 females, and then crossing the resulting heterozygotes to generate homozygote Alport mice
25 that would be the F2 generation. This is the same generation of animals used in the original description of the Alport mouse model (Cosgrove et al., *Genes Devel.*, 10:2981-2992, 1996). This is customary for early gene knockout studies, since it speeds identification of the knockout phenotype. The results obtained from these F2's, with respect to specific mRNA induction, are consistent with
30 results obtained for the pure 129 Sv/J knockout. It should be noted that all of the experiments that provide comparative analysis of Alport mice versus double knockout mice were performed on the inbred strains.

The role of TGF- β 1 on renal disease progression, as well as on the development of fibrosis in both animal models was examined. This was done by examining two different inhibitors of TGF- β 1 that work in very different ways. Using two different inhibitors (FK506 and a soluble TGF- β 1 receptor) provides
5 proof that the effect is due to TGF- β 1 inhibition rather than a side effect of the agent used. FK506 may be therapeutic in treating progressive fibrosis related to overexpression of TGF- β 1.

In the course of analyzing the different animal models and drug treatments described, there is a specific course of evaluation that has remained
10 constant throughout. Three different areas were evaluated. First, renal function was examined, which provides an assessment of overall integrity of the glomerular filter. This was done by examining the urinary output of serum albumin. Second, the structural integrity of the tissue at both light and electron microscopic levels was examined. Both transmission and scanning electron
15 microscopic procedures were used. These procedures were designed to determine the degree of renal histopathology under these different conditions. Finally, molecular analysis experiments were performed to examine what changes take place in specific genes and their corresponding proteins as a result of these different conditions. These were examined by looking at the specific
20 RNAs using northern blots, *in situ* hybridization, and RNase protection, and by using immunohistochemical detection for specific proteins. As the specific procedures are repeated for the analysis of different animal models and different drug treatments in different animal models, for the sake of avoiding redundancy it is now stated that the procedures were performed identically (as nearly as can
25 be expected in day to day practice) in all cases, and are thus described once and then referred to in latter specific examples.

There are a variety of alternative techniques and procedures available to those of skill in the art, which would similarly permit one to successfully perform the intended invention. All reagents were obtained from Sigma
30 Chemical Co., St. Louis, MO, unless otherwise specified. PBS used in all of the studies described herein was purchased in tablet form, each tablet reconstituted

in 200 ml of water to make pH 7.4 PBS, from Sigma Chemical Co, St. Louis MO, Product number P-4417.

Methods

5 I. Renal Function

A. Protein Analysis: Initial measurements of urinary protein were carried out using Albustix (Miles Laboratories, Elkhart, IN), and reading the relative amounts from the color chart provided with the kit..

Urine samples were collected at weekly intervals and 0.5 μ l fractionated
10 by electrophoresis through 10% denaturing acrylamide gels. The protein in the gels was stained with coomassie blue and photographed. Bovine serum albumin was used as a molecular weight standard.

II. Structural Integrity

15 **A. Transmission Electron Microscopy:** Fresh external renal cortex was minced in 4% paraformaldehyde, allowed to fix for 2 hours, and stored at 5°C in PBS (pH 7.4). The tissue was washed extensively (5 times for 10 minutes each at 4°C) with 0.1M Sorenson's buffer (Sorenson's buffer was made by
20 combining 100 ml of 200 mM monobasic sodium phosphate and 400 ml of 200 mM dibasic sodium phosphate with 500 ml of water, and adjusted to pH 7.4), and postfixed in 1% osmium tetroxide in Sorenson's buffer for 1 hour. The tissue was then dehydrated in graded ethanol (70%, then 80%, then 90%, then 100% for ten minutes each), and finally in propylene oxide and embedded in
25 Poly/Bed 812 epoxy resin (Polysciences, Inc., Warrington, PA) following the procedures described by the manufacturer. In short, 42 ml of polybed 812 was mixed with 26 ml of dodecylsuccinic anhydride (DDSA, Polysciences, Inc.) and 24 ml of nadic methyl anhydride (Polysciences Inc.). One and a half mls of 2,4,6 tri(dimethyl aminomethyl) phenol was added as a catalyst, and the activated resin frozen in 10 ml aliquots until needed for embedding specimen.
30 Glomeruli were identified in 1 μ m (micron) sections stained with toluidine blue, and thin sections were cut at 70 nm (nanometer) thickness using a Reichert Jung

Ultracut E ultramicrotome (Cambridge Instrument Co, Vienna, Austria). Sections were mounted onto grids and stained with uranyl acetate and lead citrate using well known procedures. Grid-mounted sections were examined and photographed using a Phillips CM10 electron microscope.

5

B. Scanning Electron Microscopy: Small pieces (approximately 2mm cubes) of kidney cortex were fixed in 3% phosphate buffered glutaraldehyde, then postfixed in 1% phosphate buffered osmium tetroxide. Samples were then dehydrated in graded ethanols, and critical point dried in carbon dioxide. The cubes were then cracked in pieces by stressing them with the edge of a razor blade, and mounted with glue onto stubs with the cracked surface facing upward. The surface was sputter coated with gold/palladium using well known procedures and visualized with a scanning electron microscope.

C. Jones Silver Methenamine Stain: Jones stain was performed on paraffin embedded kidneys using the method described by Burns and Bretschneider, *This is in: plastic embedding of tissue for light microscopy*, Educational Products Division, American Society of Clinical Pathologists, Chicago, IL, pp. 24-25, 1981.

20

III. Molecular Analysis

A. Northern Blot Analysis: Kidneys were removed and snap frozen in liquid nitrogen and ground to a powder in liquid nitrogen using a mortar and pestle. The powder was solubilized in TRIZOL reagent (GibCo/BRL, Grand Island, NY) using 5 ml of reagent per kidney. Total cellular RNA was extracted according to the manufacturer's instructions. Twenty micrograms (20 µg) of RNA was fractionated on a 1.0% agarose/formaldehyde/MOPS (3-(N-morpholino)propanesulfonic acid) gel by electrophoresis at 80V for 4 hours. Gels were soaked in water for 45 minutes, and transferred to Hybond N (uncharged nylon, New England Nuclear, Inc., Boston, MA) by capillary blot overnight using 750 mM ammonium acetate (in

30

water) as a transfer buffer. The RNA was UV crosslinked to the blot using a Stratalinker (Stratagene, Inc., LaJolla, CA). Blots were prehybridized in a solution comprised of 50% formamide, 10X Denhardt's solution, 1M NaCl, 50mM Tris-HCl, pH 7.4, 1% SDS, and 200 µg/ml sonicated and denatured salmon sperm DNA (Sigma Chemical Co., St. Louis, MO). Probes (³²P-labeled cDNA probe fragments) were labeled by random priming to a concentration of 10⁹ cpm/µg using a random priming DNA labeling kit (Boeringer Mannheim, Indianapolis, IN). Prehybridization and hybridization buffers consisted of 5X saline-sodium citrate buffer (SSC), 5X Denhardt's solution, 0.5% sodium dodecyl sulfate (SDS), and 200 µg/ml sonicated and denatured salmon sperm DNA. Filters were prehybridized for at least 5 hours and then hybridized overnight using 1 million DPM (disintegrations per minute) of probe per ml of hybridization solution. The filters were then washed at high stringency (two times for 30 minutes each at 65°C in a solution comprised of 300 mM NaCl, 30 mM sodium citrate, and 0.2% sodium dodecyl sulfate in water) and exposed to X-ray film. The quality of the RNA preparations and the consistency of loading was assessed by staining gels with ethidium bromide and scanning the 18S and 28S ribosomal RNA bands using a Gel Imager 2000 digital imaging system instrument and software package (Applied Imaging, Santa Clara, CA). Appropriate ratios of ribosomal bands confirmed that the RNA preparations were of high and consistent quality. Quantitative densitometric scanning confirmed no more than a 10% variance in sample loading. These tools were used rather than a control probe because of concerns that changes in cell physiology concomitant with progressive fibrosis makes such control probes unreliable. Quantitative differences in expression were assessed by phosphorimage analysis using a BioRad GS-525 phosphorimager (Bio Rad, Inc., Hercules, CA), and subtracted for background hybridization.

Probes were isolated from a murine kidney 5' stretch cDNA library (Clontech) by PCR amplification using published sequence for the different basement membrane collagen cDNAs and those for the associated proteins. For the basement membrane collagen probes, sequence encoding the conserved NC1

domain was amplified. The primers and conditions used were identical to those employed by Miner and Sanes, *J. Cell Biol.*, 127:879-891, 1994. For collagen COL4A1, the primers were (Muthukumaran et al., *J. Biol. Chem.*, 264:6310-6317, 1989): sense, 5'TCTGTGGACCATGGCTTC3' (SEQ ID NO:1);
5 antisense, 5'TTCTCATGCACACTTGGC3' (SEQ ID NO:2). For collagen COL4A2, the primers were (Saus et al., *J. Biol. Chem.*, 264:6318-6324, 1989): sense, 5'GGCTACCTCCTGGTGAAG3' (SEQ ID NO:3); antisense, 5'TTCATGCACACTTGGCAG3' (SEQ ID NO:4). Both COL4A1 and COL4A2 were amplified under the same conditions. Virions ($a \times 10^6$) were
10 subjected to 35 cycles of PCR using a hot start (10 minutes at 95°C), then 95°C for 30 seconds, 55°C for 30 seconds, and 72°C for one minute. Probes were subcloned and verified by DNA sequence analysis.

Probes for the basement membrane associated proteins were amplified from the same library as the basement membrane collagens. Primers were taken
15 from the 3' sequence. For the HSPG core protein, the primers were (Noonan et al., *J. Biol. Chem.*, 263:16379-16387, 1988): sense, 5'CGGGCCACATTCTCC3' (SEQ ID NO:5); antisense, 5'GGAGTGGCCGTTGCATT3' (SEQ ID NO:6). For laminin B2, the primers were (Sasaki and Yamada, *J. Biol. Chem.*, 262:17111-17117, 1987): sense
20 5'ACCAGTACCAAGGCGGA3' (SEQ ID NO:7); antisense, 5'TCATTGAGCTTGTTTCAGG3' (SEQ ID NO:8). For laminin B1, the primers were (Sasaki et al., *Proc. Natl. Acad. Sci. USA*, 84:935-939, 1987): sense 5'TAGAGGTTATTTTGCAGCAGA3' (SEQ ID NO:9); antisense 5'TTGATATCCTCATCAGCTTG3' (SEQ ID NO:10). For entactin, the primers
25 were (Mann et al., *EMBO Journal*, 8:65-72, 1989): sense 5'GTGGTTTACTGGACAGACATC3' (SEQ ID NO:11), antisense, 5'CCAATCTGTCCAATAAAGG3' (SEQ ID NO:12). For laminin A chain, the primers were (Duetzmann et al., *Eur. J. Biochem.*, 177:35-45, 1988): sense 5'ACACACTCCAAGCCACAAAAGCAAG3' (SEQ ID NO:13); antisense
30 5'GAGGGAAGACTCCTTGTTAGGTCAA3' (SEQ ID NO:14). For S-laminin, the primers were (Hunter et al., *Nature*, 338:229-234, 1989): sense,

5'GCAGAGCGGGCACGGAGC3' (SEQ ID NO:15), antisense
5'TGTACCTGCCATCCTCTCCTG3' (SEQ ID NO:16). PCR conditions were
identical to those used for the type IV collagen chains above.

The probes for MMP-2, Timp2, and Timp3 were isolated using total
5 RNA from day 13 mouse embryos by RT-PCR. The primer set for MMP-2
amplifies a 237 bp fragment from the mRNA (Reponen et al., *J. Biol. Chem.*,
267:7856-7862, 1992), and included upstream primer 5'CCC CTA TCT ACA
CCT ACA CCA3' (SEQ ID NO:17) and downstream primer 5'TGT CAC TGT
CCG CCA AAT AAA3' (SEQ ID NO:18). The primer set for Timp-2 amplifies
10 a 195 bp fragment of the mRNA (Shimizu et al., *Gene*, 114:291-292, 1992), and
included upstream primer 5'CAG AAG AAG AGC CTG AAC CAC A3' (SEQ
ID NO:19) and downstream primer 5'GTA CCA CGC GCA AGA ACC3' (SEQ
ID NO:20). The primer set for Timp-3 amplifies a 337 bp fragment from the
mRNA (Apte et al., *Developmental Dynamics*, 200:177-197, 1994), and included
15 upstream primer 5'GGT CTA CAC TAT TAA GCA GAT GAA G3' (SEQ ID
NO:21) and downstream primer 5'AAA ATT GGA GAG CAT GTC GGT (SEQ
ID NO:22). For all three probes, one microgram of total RNA was reverse
transcribed using GibCo Superscript plus reverse transcriptase and the
downstream primer, according to the protocols described by the manufacturer.
20 One tenth of the reaction was subjected to 40 cycles of hot-start PCR using PFU
polymerase (Stratagene, Inc.).

TGF- β 1 probe was a gift from H.L. Moses (Miller et al., *Mol.*
Endocrinol., 3:1926-1934, 1989), except for RNase protection which required a
human probe. For this probe, a 24 base pair fragment of TGF- β 1 was amplified
25 by PCR from a human kidney cDNA library (Clontech, Palo Alto, CA). The
primer sets used were GCA GAA GTT GGC ATG GTA G (SEQ ID NO:23)
(lower) and GGA CAT CAA CGG GTT CAC TA (SEQ ID NO:24) (upper).
The fragment was reamplified with PFU polymerase (Stratagene) and blunt-end
ligated into the pBluescript SK+ plasmid.

B. *In situ* hybridization: Kidneys were initially fixed by slow transcardiac perfusion (using 4% paraformaldehyde in PBS). The animals were first deeply anaesthetized using Avertin (2,2,2-tribromoethanol, Aldrich Chemical Co., Milwaukee, WI). The chest cavity was opened, and a small hole was made in the right ventricle by puncturing with a tuberculin needle to allow exit of the perfusate. A second tuberculin needle connected to a 30-ml syringe containing perfusion buffer was inserted into the apex of the left ventricle. One milliliter of fixative was perfused per gram body weight at a rate of about 3 milliliters per minute. Properly fixed kidneys were firm and had a marbled appearance. Following perfusion, the renal capsule was removed with iris forceps, kidneys were cut in half longitudinally (bisecting the pelvis, medulla and cortex), and placed in fixative at 4°C for an additional hour. The fixed halves were embedded in paraffin, cut at 6 µm, and transferred onto SUPERFROST PLUS microscope slides (Fisher Scientific, Inc., Pittsburg, PA). Slides were baked on a slide warmer at 60°C for 20 minutes, and stored at 4°C until used (slides are useful for up to six weeks). Kidneys from control and Alport littermates were embedded side by side to control for subtle differences that might be incurred during the hybridization procedure.

Slides were baked in a vacuum oven at 60°C for 1 hour, then dewaxed by 3 successive 2-minute washes in xylenes. The tissue was dehydrated in ethanol, deproteinated by incubating in 0.2N HCl for 15 minutes, washed with PBS and digested with 3 µg/ml proteinase K (Boehringer Mannheim, Indianapolis, IN) for 10 minutes at 37°C. The digestion was stopped by washing in 2 mg/ml glycine in PBS. Following dehydration of the tissue in graded ethanol solutions (70%, 80%, 90%, 100% for 10 minutes each at room temperature), the tissue was prehybridized, hybridized, and washed according to the protocols described with the Genius *in situ* Hybridization Kit (Boehringer Mannheim, Indianapolis, IN) with the following modifications. In both prehybridization and hybridization solutions, 10 mg/ml phenol/chloroform-extracted bakers yeast tRNA was included. This step significantly reduced non-specific signal. Following the hybridization, the tissue was washed twice in 2X SSC at 50°C, then digested

with RNase A for 6 minutes at room temperature. The amount of RNase A was determined for each probe (range from 200 ng/ml to 5 µg/ml). Negative control probes include the coding sequence for bacterial β-galactosidase or neomycin phosphotransferase. All probes were approximately 200 bases in length, cloned
5 into the SacI site of BlueScript SK+ (Stratagene, Inc., LaJolla, CA), and transcribed (after linearization) from the T3 side. The only exception was TGF-β1, which was 974 bases and cloned into a pmT vector.

C. RNase Protection Assay: Experiments were carried out using a
10 RPAII kit (Ambion, Inc., Austin, TX) following the protocols provided with the kit. For a probe, a 264 base pair fragment of TGF-β1 was amplified by PCR from a human kidney cDNA library (Clontech, Palo Alto, CA). The primer sets used were GCA GAA GTT GGC ATG GTA G (SEQ ID NO:25) (lower) and
GGA CAT CAA CGG GTT CAC TA (SEQ ID NO:26) (upper). The fragment
15 was reamplified with PFU polymerase (Stratagene) and blunt-end ligated into the pBluescript SK+ plasmid (Stratagene). The antisense probe was generated from the T7 promoter.

D. Immunofluorescence Analysis: Fresh kidney was removed, cut into
20 3-mm thick cross sections, embedded in Tissue Tek OCT aqueous compound (product number 4583, Miles Laboratories, Elkhart, IN), and frozen by placing in a -150°C freezer. Sections were cut at 3 microns using a Microm type HM505N (Zeiss, Inc., Walldorf, Germany) cryostat, and thawed onto poly-L-lysine-coated
25 slides. Slides were fixed for 15 minutes by soaking either in cold (-20°C) 95% ethanol, if to be used for staining with the basement membrane collagen-specific antibodies, or with cold (20°C) acetone for staining with antibodies specific for the basement membrane associated proteins. Slides were allowed to air dry
overnight, and stored desiccated at -80°C until used.

Samples were allowed to reach ambient temperature, then washed three
30 times in PBS (pH 7.4) at room temperature. For staining with the antibodies against the type IV collagens, the tissue was pretreated with 0.1M glycine and 6M urea (pH 3.5) to denature the protein and expose the antigenic sites. The

appropriate dilutions (determined empirically) of the primary antibodies were applied to the sample and allowed to react for 3 hours at 5°C in a humidified box. Antibodies were diluted into a solution of 5% nonfat dry milk in PBS (pH 7.4). The use of nonfat dry milk substantially reduced background fluorescence.

5 Samples were washed four times in PBS (pH 7.4) for 10 minutes each at room temperature to remove the primary antibody, and then reacted with the appropriate FITC-conjugated secondary reagent. All secondary reagents were used at a 1:100 dilution, using 7% nonfat dry milk in PBS as the diluent. Secondary reagents were allowed to react for 2 hours at 4°C. The slides were

10 then washed four times with cold PBS (pH 7.4) followed by the application of anti-fade mounting media (Vector Laboratories, Inc., Burlingame, CA). Samples were sealed under glass cover slips using clear nail polish. Slides were photographed at 1000X magnification. Jones silver methenamine staining was performed on plastic embedded specimen.

15 Goat antisera against the COL4A1 and COL4A2 chains was purchased from Southern Biotechnology, Inc., Birmingham, AL. This antibody was tested for cross reactivity by the manufacturer, and produced a staining pattern in the glomerulus that is consistent with that observed for other antibody preparations against these chains (Miner and Sanes, *J. Cell. Biol.*, 127:879-891, 1994). Anti-

20 heparin sulfate proteoglycan (HSPG) antibody is a rat monoclonal raised against the HSPG core protein purified from EHS mouse tumor. The antibody was tested for cross-reactivity with laminin, collagen type IV, fibronectin, and entactin by western blot and dot blot immunoassay by the manufacturer (Chemicon International, Temecula, CA) and as described elsewhere (Horiguchi

25 et al., *J. Histochem. Cytochem.*, 37:961-970, 1989). Anti-laminin-1 antibodies are a rabbit antisera. The immunogen was purified from EHS basement membrane and purchased from Sigma Immunochemicals (St. Louis, MO). Dot blot immunoassay, performed by the manufacturer (Sigma), confirmed the absence of cross-reactivity to collagen IV, fibronectin, vitronectin, and

30 chondroitin sulfate types A, B, and C. Anti-fibronectin is a rabbit antisera raised against fibronectin purified from human plasma. It was tested by the

manufacturer (Sigma Immunochemicals) against cross-reactivity to collagen IV, laminin, vitronectin, and chondroitin sulfate A, B, and C using dot blot immunoassay. Anti-entactin is a rat monoclonal antibody produced using EHS-derived entactin as immunogen. This reagent was purchased from Upstate
5 Biotechnology Incorporated, Lake Placid, NY, and was tested for appropriate immunoreactivity as well as for the absence of cross-reactivity with other major basement membrane components by western blot analysis (Ljubimov et al., *Exp. Cell Res.*, 165:530-540, 1986).

Immunofluorescence and Jones stained images were recorded and
10 processed using an Olympus BH2 RFLA fluorescence microscope interfaced with an Applied Imaging Cytovision Ultra image analysis system (Applied Imaging Inc.). Images were captured using a high resolution black and white video camera. These images were modified using the system software. In processing the images, care was taken to closely approximate the fluorescence
15 observed directly on the microscope.

E. Immunoperoxidase Detection: The immunoperoxidase detection method was used in immunostaining for TGF- β 1 in glomeruli as well as
20 fibronectin and collagen type I in tubunointerstitium. The collagen type I antibody is rabbit anti-mouse, and was purchased from Biogenesis, Inc. (Sandown, NH). The antisera was used at a 1:100 dilution for immunoperoxidase staining. The fibronectin antibody used was the same as for immunofluorescence staining (a rabbit anti-human fibronectin antisera from
25 Sigma Chemical Company, St. Louis, MO), and was used at a 1:100 dilution. Secondary reagents were biotinylated anti-rabbit antibodies purchased from Vector laboratories (Burlingame, CA) and used at a dilution of 1:100. The tissue was embedded in paraffin (using the same procedure as described for *in situ* hybridization) and sectioned at 3 microns. Deparaffinized sections were
30 pretreated with 5 μ g of proteinase K (Boehringer Mannheim, Indianapolis, IN) in 100mM Tris-HCl (pH 7.4) to expose epitopes. The proteinase digestion was stopped by incubating in 2 mg/ml glycine in PBS for 30 seconds. Dewaxed

proteinase K-treated tissue was washed three times with PBS and reacted with the primary antibody for 1 hour at room temperature, washed 3 times with PBS then reacted with a biotinylated secondary antibody for 1 hour at room temperature. After washing three times with PBS (pH 7.4), slides were
5 incubated with streptavidin horse radish peroxidase (3 μ g/ml, Vector Laboratories) for 30 minutes at room temperature. Following three washes with PBS, antibody binding was developed with the AEC substrate system (Vector AEC SK-4200, Vector Laboratories) following the procedures described by the manufacturer

10 For TGF- β 1, the primary antibody was chicken α -human TGF- β 1 (R&D Systems, Minneapolis, MN) used at a 1:15 dilution in 7% non-fat dry milk in PBS (which was used as diluent for all antibodies). This was allowed to react for at least 3 hours at room temperature. The secondary antibody was a biotinylated goat anti-chicken for TGF- β 1 (Vector Laboratories Burlingame,
15 CA) was applied at a 1:100 dilution and allowed to react for at least 1 hour. Following three washes, Immunoperoxidase detection was performed using an AEC kit (Vector Laboratories, Burlingame, CA).

Example 1

20 Production of an Alport/ α 1 Integrin Double Mutant

A mouse model for the autosomal form of Alport syndrome was created by targeted mutagenesis of the COL4A3 procollagen gene as described previously (Cosgrove et al., *Genes Dev.*, 10:2981-2992, 1996). This is referred to herein as the "Alport mouse" and is available from Jackson Laboratories at
25 Bar Harbor, Maine under Accession No. 2908. This α 3(IV) knockout mouse, which is in a 129 Sv/J background, was crossed (five successive backcrosses with pure 129 Sv, then with the integrin α 1 null mouse, which is pure 129 Sv), to produce a "double knockout" mouse, which is over 97.5% pure 129 Sv. The α 1 knockout mouse was provided by Humphrey Gardner of the Scripps Institute
30 in LaJolla, CA and is described in Gardner et al., *Dev. Biol.*, 175:301-313, 1996.

Example 2

Assessment of Alport Renal Disease Progression in Mouse Models

5 The mice studied in this example included Alport mice, which do not express collagen $\alpha 3(\text{IV})$ and are normal for $\alpha 1$ integrin (available from Jackson Laboratories of Bar Harbor, Maine), and double knockouts (i.e., double mutants), which do not express collagen $\alpha 3(\text{IV})$ or integrin $\alpha 1$. The double mutants were 97.5% 129 Sv and 2.5% Sv/J backgrounds.

10 Urine was collected from the mice at weekly intervals and protein analysis was carried out as described in the Methods Section. As shown in Figure 1, for animals that did not express collagen $\alpha 3(\text{IV})$ and were normal for $\alpha 1$ integrin, the mean age for Alport renal disease onset (based on a study of 6 individuals), as measured by the onset of proteinuria, was 3.5 weeks to 4 weeks. Proteinuria progressed rapidly, reaching peak levels at between 6 weeks and 6.5 weeks of age. The mean age of death due to renal failure was between 8 weeks and 9 weeks of age. No animal of this genotype (9 were tested) lived beyond 9 weeks of age. Blood urea nitrogen levels (BUN) became elevated at 7 weeks to 7.5 weeks of age. In the double mutants (four were tested for these measurements), onset of proteinuria was between 5 weeks and 5.5 weeks of age, and progressed more slowly, reaching peak levels at 9 weeks to 9.5 weeks. The mean age of death due to renal failure was between 15 weeks and 16.5 weeks. Animals developed elevated BUN at between 10 weeks and 11 weeks of age.

Example 3

25 Characterization of Double Knockout Mouse Model

Three different sets of animals (normal controls, animals not expressing the $\alpha 3(\text{IV})$ gene and normal for $\alpha 1$ integrin (Alport mice), and double mutants) were analyzed at 4 and 7 weeks of age using a number of different techniques.

30 Transmission electron microscopy was performed to assess basement membrane integrity. At 4 weeks of age (data not shown), the Alport littermates

showed rarefied basement membranes in 100% of the glomerular capillary loops. The double mutants showed some glomerular basement membrane (GBM) rarefication (i.e., irregular thickening, thinning, and splitting), however it was infrequent and rarely extensive. About 20% of the glomeruli in the double mutants showed no apparent basement membrane rarefication at all. About 5% of the glomeruli in the Alport mice at this time point were fibrotic, while there were no fibrotic glomeruli found in the double mutant littermates. Figure 2 illustrates the degree of glomerular basement membrane damage characteristic of these different mice by seven weeks of age. A typical glomerular capillary loop is illustrated. The glomerular basement membrane in the Alport mice at this developmental timepoint is badly damaged in virtually all glomeruli. Evident in Figure 2B is gross irregular thickening and thinning, and extensive effacement of the podocyte foot processes. In the double knockout, however (Figure 2C) the GBM is, for the most part, ultrastructurally normal, with the exception of a few small irregularities, and the foot processes of the podocytes maintain a normal architecture (compare regions denoted by arrows for the normal mouse in Figure 2A with the double knockout mouse in Figure 2C). At this timepoint between 30% and 50% of the glomeruli in the Alport mouse were fibrotic, while less than 5% were fibrotic in the double mutants.

Scanning electron microscopy of the 7-week old mice (data not shown) indicated that the Alport mice showed significant swelling of the foot processes of the podocytes, destroying the normally elegant and complex structure of these cells. This foot process effacement has been described for Alport glomerulonephritis. In the double mutants, while the architecture was not perfect, it was very close to that observed in glomeruli from control mice. The swelling of these foot processes is responsible for blocking the glomerular filter and leads to uremia. Therefore this finding is significant with regard to the improved glomerular function in the double mutant relative to the Alport littermates.

Paraffin embedded mounts of whole kidneys from the 7-week old mice were stained using Jones' Method and the total number of fibrotic glomeruli

counted (data not shown). Virtually all of the glomeruli from the Alport mice were affected to some degree. Most showed glomerular hypercellularity and expansion of the mesangial matrix, and about a third were fibrotic. In contrast, the glomeruli from the double mutant mice were largely normal with respect to mesangial matrix and cellularity. About 25% did show evidence of mesangial cell proliferation, and 5% were fibrotic. The analyses were repeated on two different sets of mice with very similar results.

Immunofluorescence analysis was performed using frozen renal cortex taken from these same animals. The tissue was reacted with antibodies specific for proteins known to accumulate in the GBM as a function of Alport renal disease progression. These included laminin-1 (Lam-1) (used at a 1:200 dilution), collagen $\alpha 1(\text{IV})$ and $\alpha 2(\text{IV})$ chains (COL 4A1,2) (used at a 1:15 dilution), fibronectin (Fib) (used at a 1:200 dilution), heparin sulfate proteoglycan (HSP) (used at a 1:100 dilution), and entactin (ent) (used at a 1:200 dilution). All antibodies were diluted into 7% nonfat dry milk in PBS. The results are shown in Figure 3. At seven weeks of age, all of these components were significantly elevated in the GBM of the Alport mice relative to controls. In the fibrotic glomeruli, all of these components were abundant. In the double mutant, immunostaining for collagen $\alpha 1(\text{IV})$ and $\alpha 2(\text{IV})$ chains was comparable to that for the Alport mouse in non-fibrotic glomeruli. This is expected, since the type IV collagen composition of the GBM in the double mutant is the same as that in the Alport mouse (i.e., comprised entirely of collagen $\alpha 1(\text{IV})$ and $\alpha 2(\text{IV})$ chains). Staining for laminin-1 and heparin sulfate proteoglycan were significantly reduced in the GBM of the double mutants relative to Alport mice (compare Figure 3F with 3E, and Figure 3L with Figure 3K, respectively), and there was no apparent staining for fibronectin in the GBM of the double mutants (Figure 3I), which is abundant in the GBM of the Alport mice (Figure 3H). Immunostaining in the mesangial matrix for these proteins was comparable between double mutant and Alport mice, however, for heparin sulfate proteoglycan, mesangial staining was reduced in the double mutants relative to either normal controls or Alport mice.

Northern blot analysis was performed using RNA isolated from total renal cortex from normal, Alport, and double mutant mice at 7 weeks of age. Twenty micrograms of each RNA sample was fractionated on an agarose gel, transferred to nylon by capillary blot, and hybridized to a radiolabeled probe corresponding to a portion of the mouse TGF- β 1 cDNA. Following a series of high stringency washes, the membrane was exposed to X-ray film. Figure 9 shows that, while TGF- β 1 is induced in the Alport mouse (Fourth lane from the left compared with second lane from the left, which is a control), it is not induced in Alport mice that harbor the α 1 integrin mutation (double knockouts) (third lane from the left compared with second lane from the left, which is a control). It is this data that led the investigators to speculate whether the effect of α 1 inhibitors might be mediated by the suppression of TGF- β 1. Thus the TGF- β 1 inhibitor experiments that follow were carried out to clarify this issue.

15

Example 4

Role of TGF- β 1 in Post-Proteinuric Alport Renal Disease Progression

Tissues were harvested from F-2 backcrosses of 129 Sv/J founder animals onto the C57 Bl/6 background (see above). Experiments were performed at least twice (on specimen from two different sets of animals). Results for data presented herein were clear and consistent.

20

These experiments were performed to illustrate two points. First, is there a temporal correlation between induction of TGF- β 1 mRNA and the mRNAs encoding matrix proteins that accumulate as a function of Alport renal disease progression, and second, are these mRNAs actually induced in the glomeruli? (Since only 5% of the wet weight of the kidney is glomeruli, induction of specific mRNAs in total renal cortex relates more to the issue of progressive fibrosis than glomerulonephritis.)

25

Total RNA was isolated from kidneys of Alport animals and control littermates at two week intervals starting at 6 weeks and ending at 12 weeks of age. Proteinuria in the F2 mice used in this study begins when the mice are approximately 5.5 to 6 weeks of age (data not shown). The RNA was

30

fractionated on denaturing agarose gels, transferred to nylon supports, and probed with radiolabeled probes specific for either the $\alpha 1(\text{IV})$ or $\alpha 2(\text{IV})$ collagen chains, entactin, the laminin $\beta 1$ or $\beta 2$ chain, fibronectin, or TGF- $\beta 1$. The results in Figure 4 illustrate that the mRNAs for all of these proteins with the exception of laminin $\beta 1$ are induced following the onset of proteinuria in the Alport mouse model.

Northern blots for this same timecourse were also performed for laminin $\alpha 1$, laminin $\beta 2$, laminin $\gamma 1$, heparin sulfate proteoglycan core protein, and the collagen $\alpha 4(\text{IV})$, and $\alpha 5(\text{IV})$ chains (data not shown). No significant differences in mRNA levels for these other basement membrane proteins were apparent when comparing the control to the mutant.

The results of the northern analyses were analyzed using a phosphorimager to directly quantify the relative changes in specific mRNA expression during the timecourse. Figure 5 illustrates that induction of the specific mRNA levels is first apparent at six weeks of age, or about the time when protein in the urinary space reaches the maximum levels in the F2 mice (Cosgrove et al., *Genes Dev.*, 10:2981-2992, 1996). By 8 weeks, mRNA levels peak, with the mRNAs encoding TGF- $\beta 1$ and fibronectin induced 6.6- and 9.4-fold over that of control mice, respectively. The mRNA levels for collagen $\alpha 1(\text{IV})$, $\alpha 2(\text{IV})$, and entactin were all about 3-fold induced by week 8. In contrast, no significant changes in mRNAs encoding the laminin $\beta 1$ and $\beta 2$ chains, as determined by these same total RNA northern blots, were observed at any point in renal disease progression.

To examine whether the mRNAs encoding TGF- $\beta 1$, or the different basement membrane components were induced in a particular glomerular cell type, *in situ* hybridization was performed using digoxigenin-labeled antisense probes specific for the mRNAs. Kidneys were harvested from 10 week old F2 Alport mice and normal control littermates following heart perfusion with 4% paraformaldehyde in PBS, and processed for *in situ* hybridization analysis as described in the Methods Section. Antisense probes were specific for the NC1 domain of collagen $\alpha 1(\text{IV})$, TGF- $\beta 1$, Fibronectin, entactin, or the laminin $\beta 1$

chain. A probe specific for bacterial β -galactosidase was used as a control for non-specific binding (a negative control), as this probe did not hybridize to total mouse kidney RNA on northern blots (data not shown). The control probe was hybridized at the same time as each specific probe, and treated with the same concentration of RNase A following the hybridization procedure. RNase A treatment was carried out at 0.25 μ g/ml for α 1(IV), TGF- β 1, and fibronectin, and at 3 μ g/ml for entactin and laminin β 1. The results are shown in Figure 6.

The results in Figure 6 illustrate that, for all specific mRNAs examined, elevated levels are clearly observed in the visceral epithelial cells (podocytes) of the glomerulus in the COL4A3 knockout mice (Alport mice). For the collagen α 1(IV) chain, expression of the mRNA in the control is observed in both the mesangial cells and the endothelial cells of the glomerulus (Figure 6A), which is consistent with where this molecule localizes in the mature animal. In the mutant, expression in the mesangial matrix may be elevated, as evidenced by much darker staining when compared to the mesangial cell staining in the control sample, however the most obvious difference between the control and the mutant is the ring of stained cells lining the outer circumference of the glomerulus, corresponding to the podocytes (Figure 6B). Fibronectin expression in the control glomerulus is observed primarily in the mesangial cells (Figure 6D). While staining in the mesangial cells is also observed in the mutant, the podocytes are clearly expressing significant levels of fibronectin mRNA (Figure 6E). Expression of TGF- β 1 is very weak in the glomeruli of the control animals, however, some specific staining is observed in the mesangial cells of the control animals (Figure 6G). In the mutant, TGF- β 1 mRNA levels are significantly elevated in the mesangial cells, the endothelial cells, and again in the podocytes (Figure 6H). For entactin, the mRNA localized to the podocytes of the control, which is not unexpected since this protein localizes specifically to the GBM. Unexpectedly, some mesangial cell-specific staining is observed in the control animal. While the staining in the visceral epithelial cells in the mutant seems to indicate elevated expression, this is not a quantitative assay, and the difference

between the control and the mutant is too small to be definitive (Compare Figures 6J with 6K).

Northern blots revealed that mRNA levels for the laminin β 1 chain were unchanged in the control versus the mutant throughout the timecourse. *In situ* hybridization analysis for this same message illustrated the expected mesangial cell-specific localization in glomeruli from control kidneys (Figure 6M). In the glomeruli from mutant mice, however, the mRNA is clearly induced in the visceral epithelial cells (Figure 6N).

Tissue samples were harvested at 3 and 5 weeks of age, and analyzed by *in situ* hybridization using these same probes. The staining pattern in these glomeruli were indistinguishable from those of normal littermates (data not shown). This suggest that activation of these genes in the podocytes occurs after the onset of proteinuria.

TGF- β 1 protein data based on immunoperoxidase detection using antibodies specific for the active isoform of the cytokine corroborate data obtained by *in situ* hybridization analysis for TGF- β 1 messenger RNA (compare immunostaining of Figure 7B with Figure 7A). This illustrates that elevated expression of TGF- β 1 messenger RNA in the podocytes translates into elevated protein.

RNase protection analysis was performed to determine if mRNA levels for the cytokine are also elevated in human renal cortex from Alport versus control patients. Human Alport renal cortex was removed from a 15 year old boy during transplant surgery. The specimen had a moderate level of scarification, with about 50% of the glomeruli fibrotic. The specimen was immediately removed and snap frozen in liquid nitrogen. Normal human kidney RNA was purchased from Clontech (Palo Alto, CA) and was a pooled sample from a collection of normal human sources. RNA from the Alport specimen was isolated using the same procedure that was used for mouse kidneys. The RNA was examined for its integrity by fractionating 10 micrograms on an agarose gel, and staining the gel with ethidium bromide (10 micrograms per ml in water). Both the normal and Alport samples were intact based on the relative quantity of

28S and 18S ribosomal RNA bands. The RNase protection experiment was carried out according to the methods. Data in Figure 8 illustrate a 3-4 fold elevation of TGF- β 1 messenger RNA in human Alport renal cortex relative to control. This proves that the cytokine is also overexpressed in human Alport
5 kidneys. This data substantiates the expectation that this technology will work in humans.

Example 5

Use of a Neutralizing Antibody to Block α 1 β 1 Integrin

10 As an example to illustrate that a soluble agent capable of blocking the interaction of α 1 β 1 integrin with its ligand would produce the same effects on Alport renal disease pathogenesis as the α 1 gene knockout mutation, the antibody described in Fabbri et al., *Tissue Antigens*, 48:47-51, 1996 was obtained. This antibody was injected (400 ng/injection, three times weekly,
15 intraperitoneally) into Alport mice starting at 2 weeks of age. Animals were collected at six weeks of age and the basement membranes analyzed by transmission electron microscopy. As evident in Figure 10, the basement membranes in these treated animals were largely regular, having the normal trilaminar appearance. Endothelial cell swelling was observed due to immune
20 response to the antibody. These results illustrate that a soluble agent that blocks the integrin α 1 β 1 receptor will slow Alport GBM disease progression in much the same way as is observed in the double knockout mouse line.

Example 6

25 Effects of TGF- β 1 Inhibition Alone in the Alport (129 Sv/J) Mouse Model

The experimental protocol was to inject with either FK506 (2 μ g/g body weight, injected intraperitoneally, Fujisawa Pharmaceutical Co., Ltd., Osaka, Japan), or a soluble TGF-B1 receptor (25 μ g/injection, intravenously through the tail vein, Biogen Inc., Cambridge, MA) twice weekly starting at 3 weeks of age.
30 Kidneys were harvested at 7 weeks of age and subjected to the described analyses.

Transmission electron microscopic analysis of the basement membrane ultrastructure under various conditions is illustrated in Figure 11. Figure 11A shows a glomerular capillary loop from a normal untreated animal. Note the regular foot processes and the trilaminar basement membrane staining. Figure 5 11B shows a capillary loop from a typical 7 week old 129 Sv/J Alport mouse. Note the swollen foot processes and gross focal thickening of the GBM. Figure 11C illustrates a typical capillary loop from a 7 week old Alport animal treated with FK506. There is an obvious lack of basement membrane thickening, suggesting that the drug reduces the rate of matrix accumulation in the GBM. 10 There is, however, a significant degree of swelling in the foot processes, with a notable lack of foot process architecture. This same observation is made in mice injected with the TGF- β 1 soluble receptor (Figure 11D). These data illustrate that TGF- β 1 inhibitors can prevent irregular GBM thickening, but cannot prevent changes in foot process architecture associated with advanced Alport 15 GBM disease.

Some of the kidney specimen was processed for scanning electron microscopy. Glomeruli were exposed by freeze fracture of renal cortex, which removes the Bowman's capsule, exposing the outer layer of podocytes as they cover the capillary loops of the glomerulus. A normal glomerulus is illustrated 20 in Figure 12A, where the complex architecture of the podocytes is very evident as the branching foot processes wrap around the capillary loops. In a typical 7 week old Alport mouse, the surface of the podocytes in the glomeruli are notably lacking in the fine filamentous branches, which have been obliterated by swelling (Figure 12B). In the Alport animal treated with either FK506 or the 25 soluble receptor for TGF- β 1, the surface of the glomerulus looks much the same as that in the untreated Alport mouse (Figure 12C). This figure clearly demonstrates that blocking TGF- β 1 alone does not protect against the changes in foot process architecture associated with advanced Alport glomerular disease.

Proteinuria was measured by polyacrylamide gel electrophoresis of 30 lyophilized urine collected at weekly time points during the course of drug treatment. As previously mentioned, the presence and abundance of albumin in

the urine provides a comprehensive assessment of the integrity of the glomerular filter. Figure 13 illustrates that while the administration of TGF- β 1 inhibitors delay the onset of proteinuria, progression to high levels of albumin in the urine occurs very rapidly (1 week). These results imply that the TGF- β 1 inhibitors, when used alone, do not improve the glomerular filter although they delay the onset of proteinuria. This property is likely to be directly related to the inability of these inhibitors to prevent foot process effacement of the podocytes described above and illustrated in Figures 11 and 12.

It should be noted that drug administration to normal littermates resulted in no discernible differences when compared to uninjected normal mice.

Example 7

Effects of TGF- β 1 Inhibitors on the Double Knockout (DKO) Mice

Mice (DKO mice are null for both the collagen α 3(IV) and integrin α 1 genes) were injected with TGF- β 1 inhibitors FK506 (2 μ g/gram body weight, twice weekly, intraperitoneal injections) or Biogen's TGF- β 1 soluble receptor (25 μ g per injection, twice weekly, intravenous injections) starting at four weeks of age. The kidneys were taken at 10 weeks of age and analyzed. The 10 week time point was chosen since, in the double knockouts, the disease typically progresses to the point where significant irregular thickening of the GBM is observed, and the animals are beginning to progress towards end stage renal failure. Thus, if the TGF- β 1 inhibitors are to provide additional protective benefits, those benefits should be evident at this stage in GBM disease progression. Transmission electron microscopic analysis showed very clear and consistent differences between mice injected with the inhibitors and untreated double knockout mice. A typical example of these differences is illustrated in Figure 14. Figure 14B illustrates the typical profile of a glomerular capillary loop in the double knockout mouse at 10 weeks of age. Notable are the significant pockets of basement membrane thickening characteristic of progressing Alport glomerulonephritis. The foot processes of the podocytes possess a high degree of regular architecture with well developed slit diaphragms

even in the advancing diseased state. This characteristic of double knockout mice was not shared by the Alport mice (compare foot processes with those shown in Figure 12B).

When double knockout mice were treated with TGF- β 1 inhibitors, there was a marked reduction of both focal GBM thickening and foot process effacement (Figure 14C was treated with FK506, and Figure 14D was treated with the soluble TGF- β 1 receptor). While the GBM of most glomeruli do not have completely normal ultrastructure (note the moderate GBM irregularity apparent in Figure 14D), completely lacking are the significant pockets of GBM thickening apparent in most glomerular capillary loops of untreated double knockout animals (as in Figure 14B) at this developmental stage. In about 25% of the glomeruli examined in this way, TGF- β 1 inhibitors restored glomerular ultrastructure to a degree where the DKO glomeruli were indistinguishable from those of normal mice (Figure 15A shows the GBM of a ten week old normal mouse; Figure 15B shows the GBM of a 10 week old double knockout treated with FK506). Considering that this is 2 weeks past the mean age of end stage renal failure in the unmanipulated Alport animal model, this is truly a unique and remarkable finding.

Proteinuria was examined in these same mice collected weekly during the course of treatment. Samples (equivalent to approximately one half of one microliter) were analyzed by electrophoresis on polyacrylamide gels. Albumin was visualized by staining with coomassie blue. The results in Figure 16 illustrate that both treatment with either FK506 (Figure 16D) or the soluble receptor for TGF- β 1 (Figure 16B) markedly improved the performance of the glomerular filter relative to untreated double knockout mice (Figure 16A). Figure 16C shows the urinary protein for a normal mouse treated with FK506. Notable is the diffuse group of bands evident at every timepoint in both the normal and the DKO (Figure 16D) mice treated with FK506. This is always observed in mice treated with the drug, and probably related to the nephrotoxic effects reported in some patients treated with the drug following transplant (Solez et al., *Transplantation*, 66:1736-1740, 1998).

Example 8

Mechanisms for the Synergistic Effects of $\alpha 1$ Integrin Blockers and TGF- $\beta 1$ Inhibitors in Slowing Onset and Progression of Alport Glomerulonephritis

5 Data illustrated in Figures 11, 12, and 14 collectively suggest that the reason $\alpha 1$ integrin blockers are synergistic with TGF- $\beta 1$ blockers is that the $\alpha 1$ inhibition results in improved podocyte foot process architecture while TGF- $\beta 1$ inhibition results in reduced matrix deposits in the GBM. Figure 17 is provided to further substantiate the role of $\alpha 1$ integrin blockers in improving the podocyte

10 foot process architecture. Renal cortex was prepared the same way as that illustrated in Figure 12. Figure 17A illustrates the surface of a glomerulus from a 7 week old normal mouse. Figure 17B illustrates a glomerulus from a 7 week old Alport mouse. Note the loss of podocyte architecture due to effacement of the foot processes. Figure 17C illustrates the surface of a glomerulus from a 7

15 week old double knockout mouse. Note the near total restoration of normal foot process architecture. These data are consistent with the cross sectional view provided by transmission electron microscopy shown in Figure 14B, where foot processes have excellent morphology in the double knockout mouse.

Example 9

The $\alpha 1$ Integrin Blocking Effect

20 In examining a plausible mechanism for this phenomenon, the laminin chains were evaluated. Since it is known that the primary laminin found in the glomerular basement membrane is laminin 11 (Miner et al., *J. Cell Biol.*, 137:65-701, 1997), it was believed that the appearance of a new laminin in the Alport

25 GBM might contribute to loss of podocyte attachment to the GBM. Indeed, upon examining the laminin composition of Alport GBM, the laminin $\alpha 2$ chain, which normally localizes exclusively to the mesangial matrix in normal mice, was found in the GBM of Alport mice. Figure 18 illustrates a series of panels of

30 glomeruli immunostained using a dual fluorescence labeling protocol.

In dual fluorescence analysis, fresh renal cortex was embedded in Tissue Tek aqueous embedding compound, snap frozen, and cut at 4 microns on a cryostat. Slides were postfixed in cold (-20°C) 100% acetone for 10 minutes, and then air dried overnight. Tissue was rehydrated by three washes in PBS for 5 10 minutes each. The primary antibodies were diluted together in 7% non-fat dry milk (BioRad). An anti-entactin antibody (Chemicon Inc.) was used as a known marker for glomerular basement membrane at a dilution of 1:200. The laminin $\alpha 2$ chain-specific antibody was a gift from Dr. Peter Yurchenco (Robert Wood Johnson Medical School, Piscataway, NJ). The specificity of this 10 antibody for the laminin $\alpha 2$ chain was illustrated in Cheng et al., *J. Biol. Chem.*, 272:31525-31532, 1997. The antibody was used at a concentration of 1:10. Primary antibodies were allowed to react overnight at 4°C in a humidified dish. Slides were washed three times for 10 minutes each in cold PBS then reacted with the secondary antibodies, which were also added together. Secondary 15 antibodies were a Texas red-conjugated anti-rabbit for laminin $\alpha 2$, and an FITC-conjugated anti-rat for entactin, both used at a 1:100 dilution (Vector Laboratories, Burlingame, CA). Secondary reagents were allowed to react for 4 hours at 4°C. Slides were washed 3 times for ten minutes each with PBS, and a drop of Vectashield anti-fade mounting media (Vector Laboratories, Burlingame, 20 CA) applied before sealing under glass coverslips. Images for each antibody were digitally overlaid using a BH-2 epifluorescence microscope interfaced with a Cytovision Ultra image analysis system (Applied Imaging, Inc.).

A glomerular basement membrane specific antigen (entactin) is in green, while the laminin $\alpha 2$ chain is in red. In places where the entactin and laminin $\alpha 2$ 25 co-localize staining is yellow. In Figure 18 group I, panel A represents immunostaining of a glomerulus from a 7 week old normal mouse. Here laminin $\alpha 2$ localizes exclusively to the mesangial matrix. Panel B illustrates staining in a 7 week old Alport littermate. Indicated by the arrows, the capillary loops stain predominantly in yellow, illustrating that in the Alport mouse, laminin $\alpha 2$ 30 localizes to both the mesangial matrix and the glomerular basement membrane. Panel C shows immunostaining in the glomerulus from a 129 Sv/J Alport mouse

treated with FK506 (cortex was taken from animals used in experiments described above and represented in Figures 11, 12, and 13). Here, again, most of the glomerular capillary loops are yellow, indicating that inhibition of TGF- β 1 activity does not prevent the accumulation of laminin α 2 in the GBM of Alport mice. In a 7 week old double knockout mouse, however, there is no laminin α 2 immunostaining in the glomerular capillary loops (Panel D, arrows). The predominant integrin receptor on the surface of the podocytes is integrin α 3 β 1 (Patey et al., *Cell Adhesion and Communication*, 2:159-167, 1994). This integrin is widely believed to play a key role in podocyte attachment to the GBM and maintenance of normal foot process architecture. (Smoyer and Mundel, *J. Mol. Med.*, 76:172-183, 1998). As an example, it was recently shown that knocking out the integrin α 3 gene resulted in complete obliteration of podocyte foot process architecture (Kreidberg et al., *Development*, 122:3537-3547, 1996). More recently, a soluble α 3 β 1 integrin receptor was produced and shown to bind with high affinity to laminin α 5 chain containing laminins (like laminin-11 which is a heterotrimer comprised of an α 5, β 2, and γ 1 chain), but not to α 2 chain containing laminins (Eble et al., *Biochemistry*, 37:10945-10955, 1998). Taken together with this information, the data presented herein support a model where, in the Alport mouse, progressive deposition of laminin α 2 containing laminins in the GBM results in reduced adhesion via integrin α 3 β 1 receptors, resulting in foot process effacement. Blocking the integrin α 1 chain results in reduced or absent deposition of the laminin α 2 chain in the GBM, preventing the loss of normal foot process architecture.

To further substantiate this point, laminin α 2 chain distribution in the 2 week old Sv/J Alport mouse compared with a normal littermate was evaluated. At this very early stage in GBM disease progression, there were notable "pockets" of GBM thickening sparsely distributed on about half of the glomeruli. One such pocket of GBM thickening is shown in Figure 19B. The GBM and podocyte foot processes are morphologically normal in unaffected regions of the glomeruli at this developmental stage, however, at the regions of focal thickening, the foot processes are swollen and effaced, much like the more

generalized changes recognized later in GBM disease development. It was surmised that if laminin $\alpha 2$ deposition results in loss of focal adhesion contact with the podocytes, focal deposits of laminin $\alpha 2$ in the GBM of 2 week old Alport mice should be seen. This is indeed the case as illustrated in Figure 18
5 Group II. The arrows on panel B denote focal deposition of laminin $\alpha 2$ in the GBM of 2 week old Alport mice. This is the earliest molecular change (other than change in type IV collagen composition, which results from the inborn genetic mutation) ever detected in the Alport mouse model, and corresponds exactly with the onset of detectable GBM damage.

10

Example 10

Synergistic Effect of TGF- $\beta 1$ Inhibitors with $\alpha 1$ Integrin Blockers

As illustrated in Figure 3, the matrix that accumulates in the GBM and the interstitium as a function of Alport renal disease pathogenesis includes
15 collagen $\alpha 1(IV)$ and $\alpha 2(IV)$ chains, fibronectin, and entactin. As illustrated in Figure 20 (first two lanes of each gel), the messenger RNAs encoding each of these proteins is induced in the Alport kidney relative to normal controls. Injection of TGF- $\beta 1$ inhibitors reduces the degree of induction substantially (Figure 20 last two lanes of the gel). This may account for the reduction in
20 basement membrane thickening observed in the Sv/J Alport mice treated with TGF- $\beta 1$ inhibitors (illustrated in Figure 11).

This similar set of northern blots were performed using RNA from kidneys from double knockout mice that were either not treated, or injected with TGF- $\beta 1$ inhibitors. These were the same mice used to derive data presented in
25 Figure 14, thus the drug injection protocol is described in Example 7. It is evident from the data presented in Figure 21 that the administration of TGF- $\beta 1$ inhibitors does not significantly change the levels of mRNAs encoding matrix proteins as compared to non-injected control versus double knockout mice. There is, however, a marked effect on expression of mRNA encoding the
30 metalloproteinase inhibitor Timp-3 will add to probes (Figure 21, bottom row). As evidenced in lanes 1 and 2, there is a marked reduction in Timp-3 expression

in the kidney of 10 week old untreated double knockout mice relative to control mice (a nine-fold difference based on phosphorimage analysis). This reduction in Timp-3 expression is not observed in the double knockout mice injected with either FK506 (lanes 3 and 4) or the TGF- β 1 soluble receptor (lanes 5 and 6).

5 This same effect on Timp-3 expression was observed in Sv/J mice (Figure 20, bottom row), illustrating that the ability to inhibit the suppression of Timp-3 mRNA in Alport mice is a result of TGF- β 1 inhibition inhibitors, rather than a result of dual inhibition of α 1 integrin and TGF- β 1.

The functional importance of this observation is based on the fact that
10 Timp-3 is a modulator of matrix metalloproteinases, and has been suggested to be a key player in renal basement membrane homeostasis and loss of homeostasis in disease (Esposito et al., *Kidney Int.*, 50:506-514, 1996; and Elliot et al., *J. Am. Soc. Nephrol.*, 10:62-68, 1999). A reduction in the expression of Timp-3 metalloproteinase inhibitor will result in a corresponding increase in
15 metalloproteinase activity. Such an increase could cause basement membrane damage, resulting in the activation of TGF- β 1 with concomitant accumulation of matrix. Breaking this cycle would thus result in the restoration of basement membrane homeostasis, which should be manifest by restoration of GBM morphology, which is what was observed (Figures 11, 14, and 15).

20

Example 11

Inhibition of Interstitial Fibrosis in Double Knockout Mice

Treated with TGF- β 1 Inhibitors

The role of TGF- β 1 in upregulation of matrix proteins and in renal
25 fibrosis has been well established (Yand et al., *J. Am. Soc. Nephrol.*, 5:1610-1617, 1994; Border and Ruoslahti, *J. Clin. Invest.*, 90:1-7, 1992). In the double knockout mouse, renal interstitial fibrosis is delayed, but does become wide spread at about 10 weeks of age, and progresses through end stage renal failure at approximately 15 weeks of age. Animals injected with TGF- β 1 inhibitors
30 were analyzed using three markers for interstitial fibrosis and compared directly with 10 week old double knockout animals that were not treated with inhibitors.

Animals were injected using the same protocol as those used to generate Figure 14 in Example 7. For Figures 22, 23, and 24, panel A is a control, Panel B is an untreated double knockout, panel C is a double knockout treated with FK506, and panel D is a double knockout treated with the TGF- β soluble receptor. All 5 of these figures represent low magnification 50X views of the renal cortex. Figure 22 is a Jones silver methenamine stain, which is a standard histochemical stain for matrix. It is evident that matrix is accumulating in the interstitium of the renal cortex in the untreated mouse (compare panel B with Panel A). The renal cortex from animals treated with either TGF- β 1 inhibitor, however, were 10 indistinguishable from the controls, indicating little to no fibrosis. Commonly used molecular markers for renal interstitial fibrosis include collagen type I and fibronectin (Yamamoto et al., *Kidney Int.*, 45:916-927, 1994). Figure 23 illustrates immunostaining for collagen type I. Clearly, collagen type I is accumulating in the interstitium of the renal cortex of untreated animals 15 (compare panel B to control in panel A). Figure 23 panels B and C illustrate a relative absence of collagen type I accumulation in kidneys from double knockout mice treated with FK506 or the soluble receptor, respectively. The same scenario holds true for fibronectin, which is abundant in the cortex of untreated double knockouts (Figure 24B), and much like controls in the renal 20 cortex of mice injected with the TGF- β 1 inhibitors (Figure 24 panels C and D). Collectively, these data indicate that TGF- β 1 inhibitors in combination with integrin alpha 1 blockers are affective at preventing (or delaying) interstitial fibrosis in the Alport mouse model.

25 All references, patents, patent applications, and publications cited herein are expressly incorporated by reference into this disclosure. It will be appreciated by those skilled in the art that while the invention has been described above in connection with particular embodiments and examples, the invention is not necessarily so limited and that numerous other embodiments, examples, uses, 30 modifications and departures from the embodiments, examples and uses may be made without departing from the inventive scope of this application.

What Is Claimed Is:

1. A method of limiting a kidney disorder in a patient comprising administering to the patient an effective amount of an $\alpha 1\beta 1$ integrin receptor inhibitor.
- 5 2. The method of claim 1 further comprising administering to the patient an effective amount of a TGF- $\beta 1$ inhibitor.
- 10 3. The method of claim 2 wherein the $\alpha 1\beta 1$ integrin receptor inhibitor and the TGF- $\beta 1$ inhibitor are administered simultaneously.
4. The method of claim 2 wherein the TGF- $\beta 1$ inhibitor irreversibly binds to TGF- $\beta 1$ and inhibits its ability to bind with its receptor.
- 15 5. The method of claim 2 wherein the TGF- $\beta 1$ inhibitor is an agent that inhibits the ability of TGF- $\beta 1$ to transduce signals to the nucleus of a kidney cell.
- 20 6. The method of claim 5 wherein the TGF- $\beta 1$ inhibitor is a calcineurin inhibitor.
7. The method of claim 6 wherein the calcineurin inhibitor is tacrolimus.
- 25 8. The method of claim 1 wherein the $\alpha 1\beta 1$ integrin receptor inhibitor is a blocking agent that binds to the $\alpha 1\beta 1$ integrin receptor binding site on the surface of a kidney cell.
9. The method of claim 8 wherein the $\alpha 1\beta 1$ integrin receptor blocking agent comprises a peptide.

10. The method of claim 9 wherein the peptide is at least a 9-mer fragment of a protein selected from the group consisting of laminin, fibronectin, entactin, and collagen type 4.
- 5 11. The method of claim 8 wherein the peptide is an antibody.
12. The method of claim 1 wherein the kidney disorder comprises renal glomerulonephritis, renal fibrosis, or both.
- 10 13. The method of claim 12 wherein the renal glomerulonephritis or renal fibrosis is associated with Alport syndrome, IDDM nephritis, mesangial proliferative glomerulonephritis, membrano proliferative glomerulonephritis, crescentic glomerulonephritis, diabetic nephropathy, and renal interstitial fibrosis.
- 15 14. A method of delaying the onset of and/or slowing the progression of Alport syndrome in a patient, the method comprising administering to the patient an effective amount of an agent that inhibits signal transduction through an $\alpha 1\beta 1$ integrin receptor of a kidney cell.
- 20 15. A method of delaying the onset of and/or slowing the progression of Alport syndrome in a patient, the method comprising blocking an $\alpha 1\beta 1$ integrin receptor binding site on the surface of a kidney cell of the patient.
- 25 16. The method of claim 15 wherein blocking the $\alpha 1\beta 1$ integrin receptor binding site comprises contacting the kidney cell with an effective amount of an $\alpha 1\beta 1$ integrin receptor binding site peptide.

17. The method of claim 16 wherein the peptide is at least a 9-mer fragment of a protein selected from the group consisting of laminin, fibronectin, entactin, and collagen type 4.
- 5 18. The method of claim 15 further comprising administering to the patient an effective amount of a TGF- β 1 inhibitor.
19. The method of claim 18 wherein the TGF- β 1 inhibitor irreversibly binds to TGF- β 1 and inhibits its ability to bind with its receptor.
- 10 20. The method of claim 18 wherein the TGF- β 1 inhibitor is an agent that inhibits the ability of TGF- β 1 to transduce signals to the nucleus of a kidney cell.
- 15 21. The method of claim 20 wherein the TGF- β 1 inhibitor is a calcineurin inhibitor.
22. The method of claim 21 wherein the calcineurin inhibitor is tacrolimus.
- 20 23. A method for delaying the onset of and/or slowing the progression of kidney disease in insulin dependent diabetes mellitus in a patient, the method comprising administering to the patient an effective amount of an agent that inhibits signal transduction through an α 1 β 1 integrin receptor of a kidney cell.
- 25 24. A method for delaying the onset of and/or slowing the progression of kidney disease in insulin dependent diabetes mellitus in a patient, the method comprising blocking an α 1 β 1 integrin receptor binding site on the surface of a kidney cell of the patient.

25. A method of limiting renal fibrosis in a patient, the method comprising reducing TGF- β 1 activity in the patient while inhibiting α 1 β 1 integrin receptors of the patient's kidney cells.
- 5 26. The method of claim 25 wherein the step of reducing TGF- β 1 activity comprises administering to the patient an agent that irreversibly binds to TGF- β 1 and inhibits its ability to bind with its receptor.
27. The method of claim 26 wherein the step of reducing TGF- β 1 activity
10 comprises administering to the patient an agent capable of inhibiting the ability of TGF- β 1 to transduce signals to the nucleus of a kidney cell.
28. A method of limiting renal fibrosis in a patient comprising administering to the patient a calcineurin inhibitor.
- 15 29. The method of claim 28 wherein the calcineurin inhibitor is tacrolimus.
30. A mouse model for kidney disease wherein the mouse does not express a normal collagen type 4 composition in the glomerular basement
20 membrane of the mouse and does not express the α 1 β 1 integrin receptor.
31. The mouse model of claim 30 wherein the mouse does not incorporate collagen α 3(IV), α 4(IV), and α 5(IV) chains into its glomerular basement membrane.
- 25 32. A method of screening an agent for use in limiting a kidney disorder, comprising administering the agent to a mouse model for kidney disease, wherein the mouse does not express a normal collagen type 4 composition in the glomerular basement membrane of the mouse and
30 does not express the α 1 β 1 integrin receptor.

33. A method of limiting matrix accumulation in the GBM of a patient with Alport Syndrome comprising reducing TGF- β 1 activity in the patient.

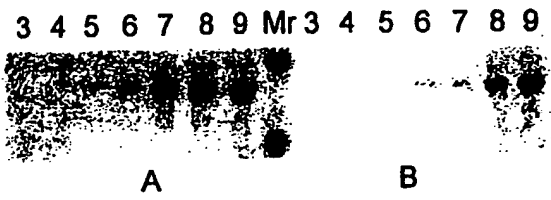


Fig. 1

Fig. 2



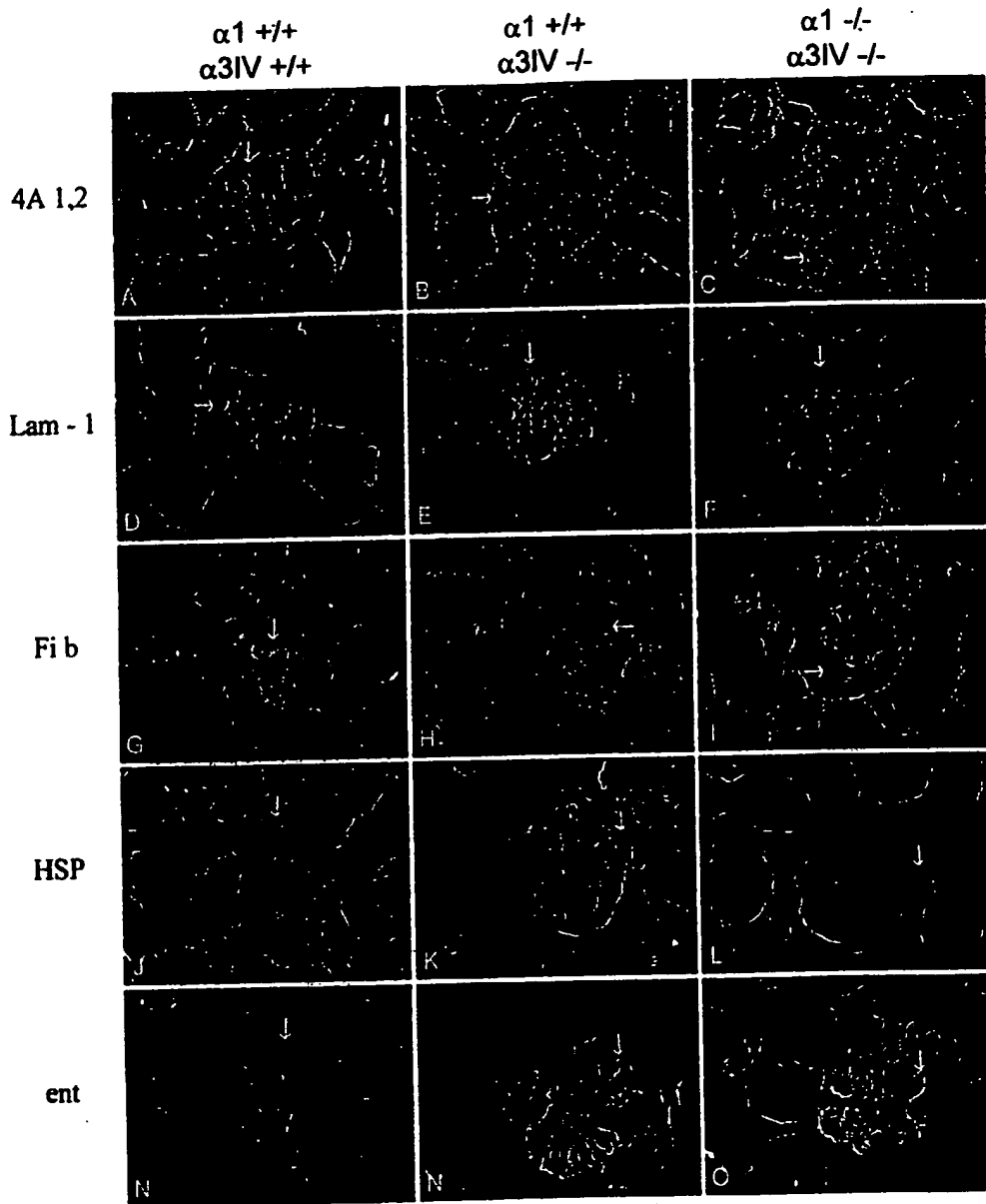


Fig. 3

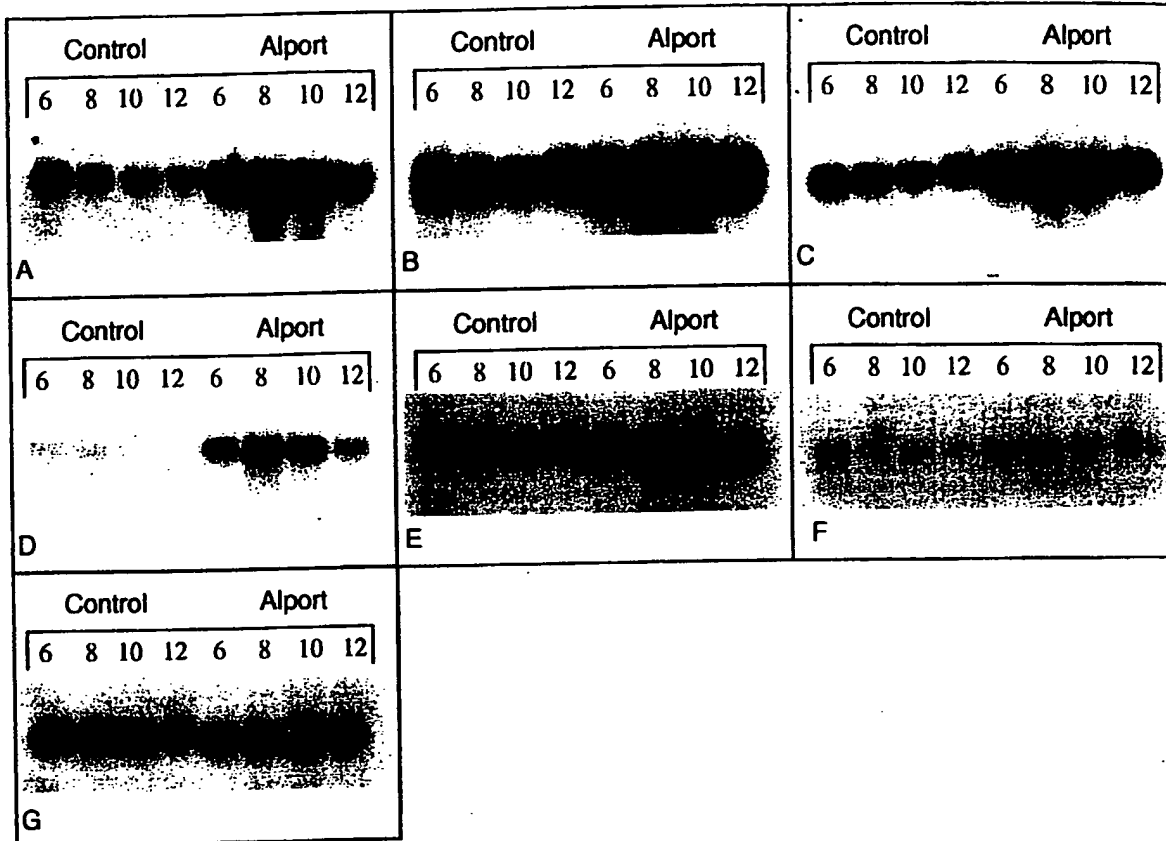


Fig. 4

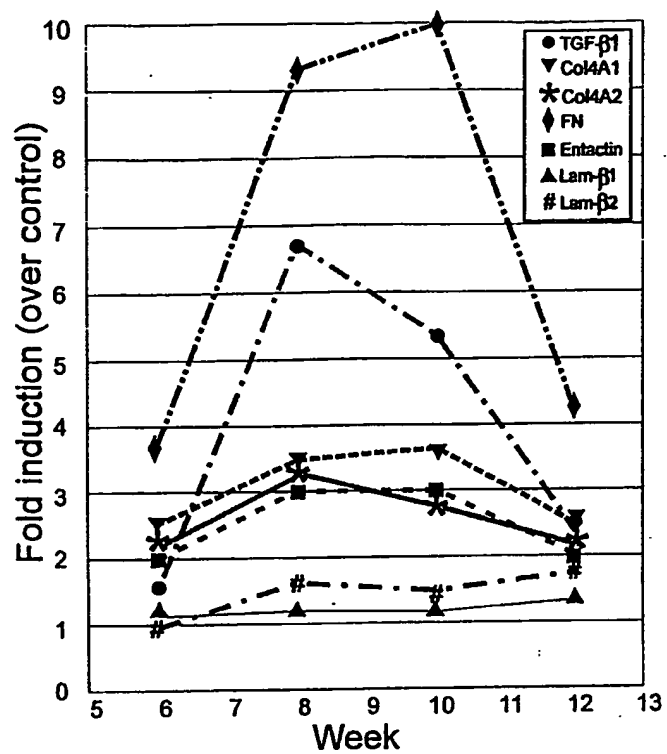


Fig. 5

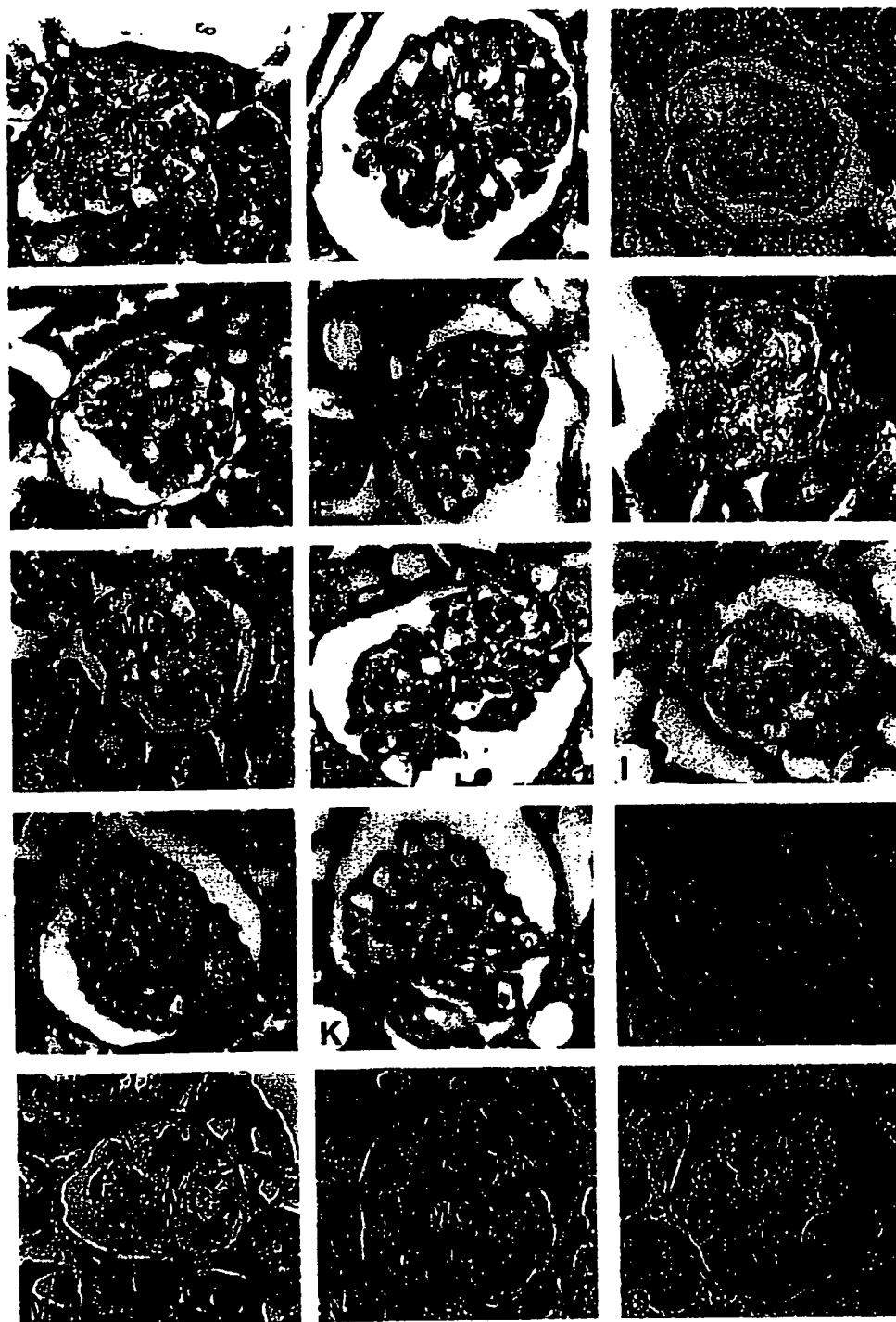
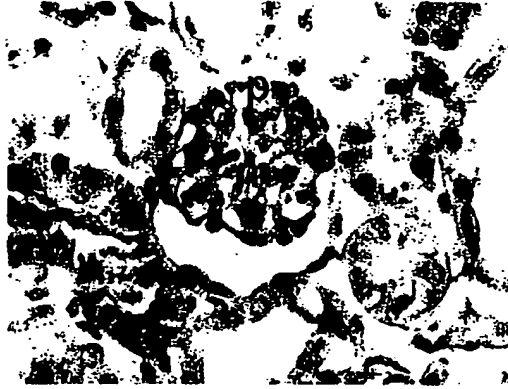


Fig. 6



Control



Alport

Fig. 7

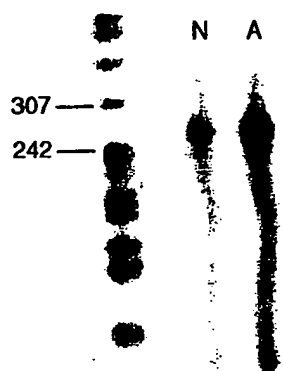
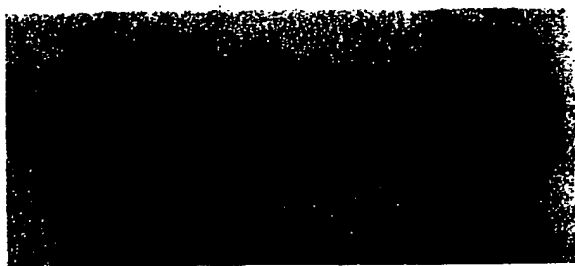


Fig. 8

$\alpha 1$	-/-	+/+	-/-	+/+
4A3	+/+	+/+	-/-	-/-



TGF- β 1

Fig. 9

7wk SV/J $\alpha 1$ integrin nAb

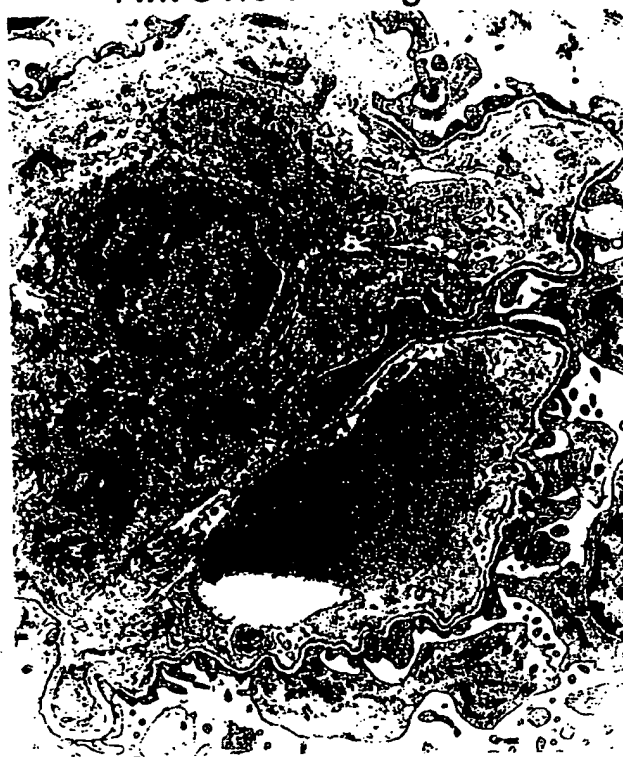


Fig. 10

7 wk SV/J Alport



Fig. 11

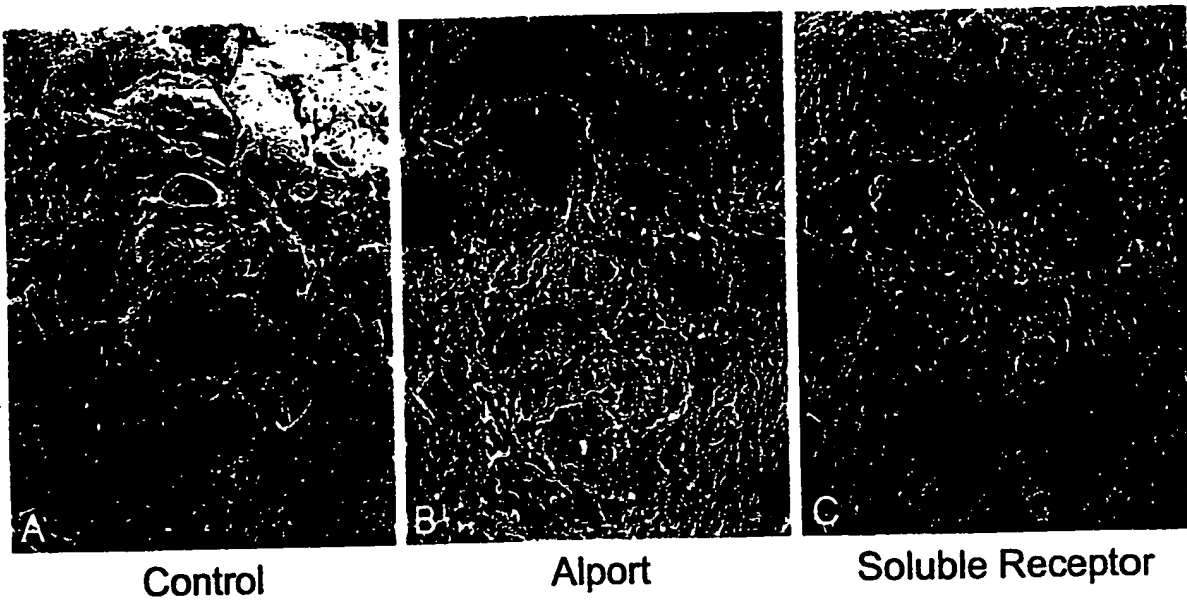


Fig. 12

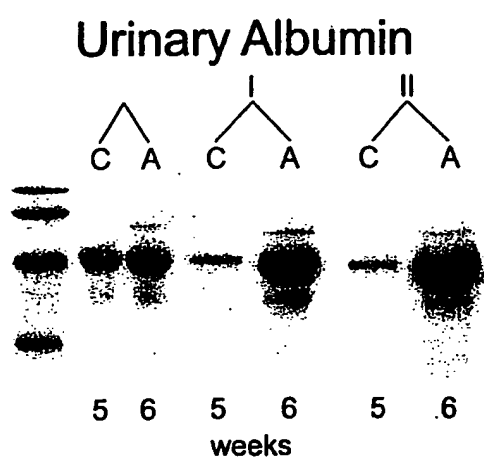


Fig. 13

10 wk DKO

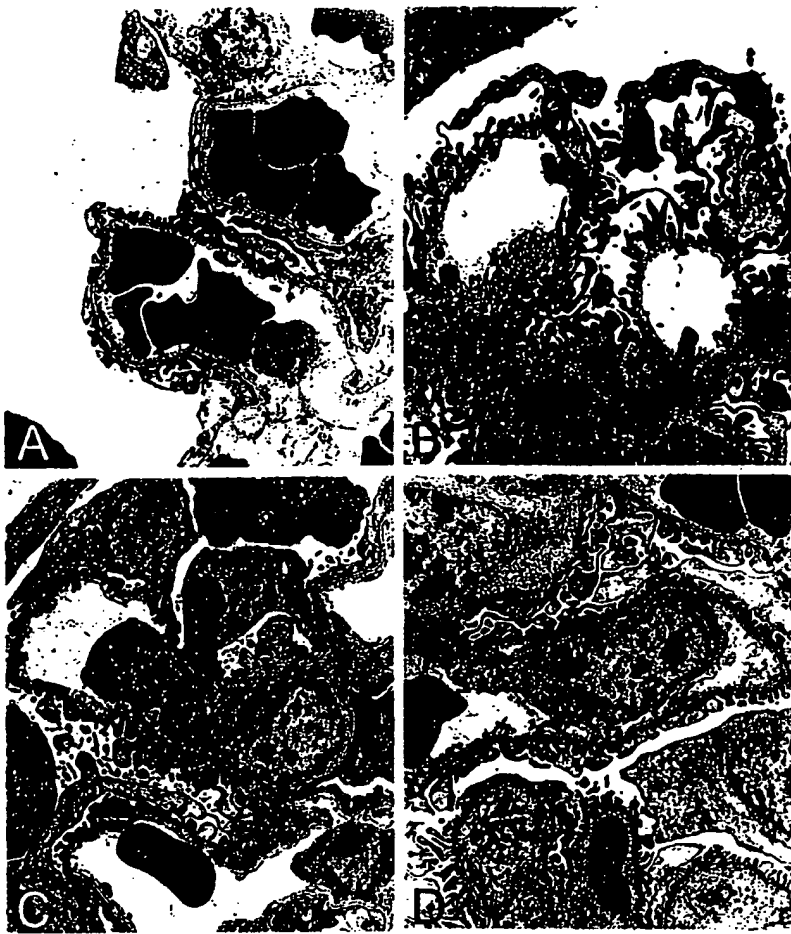


Fig. 14

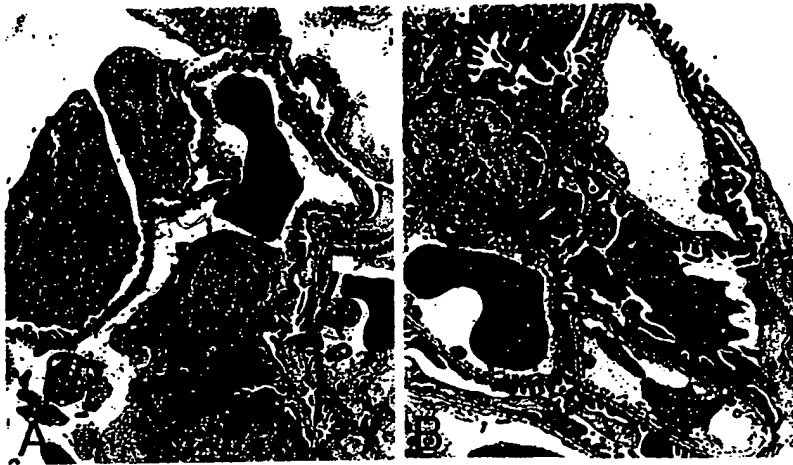


Fig. 15

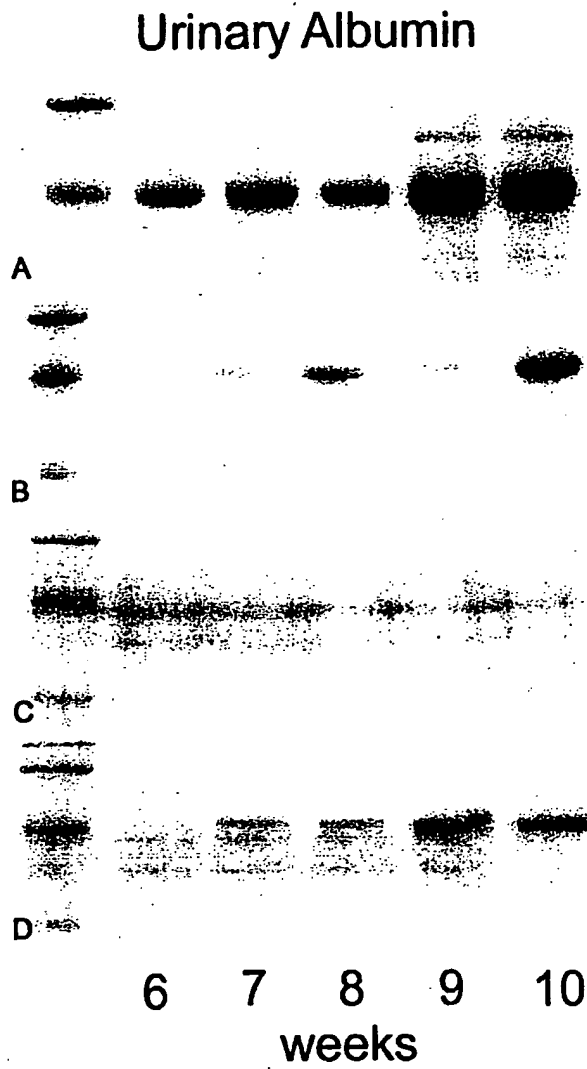
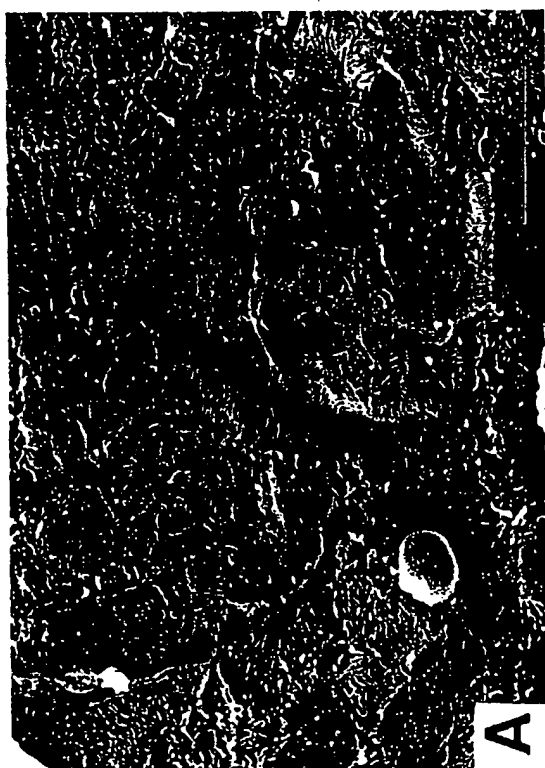
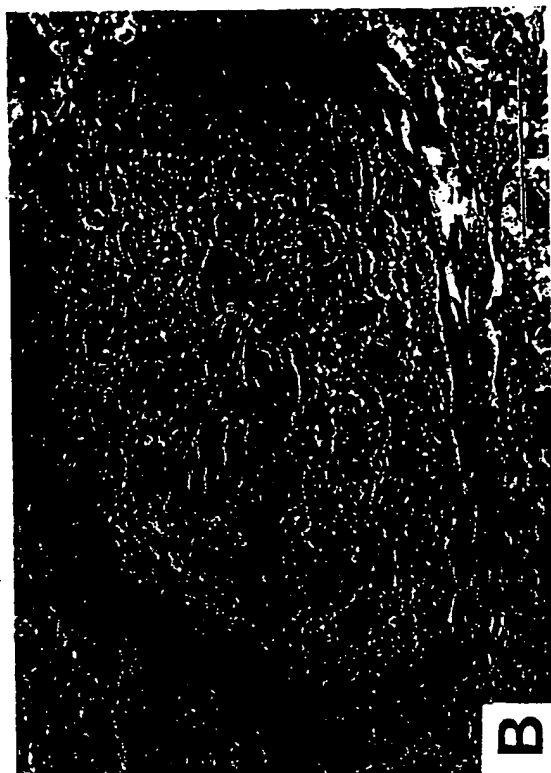


Fig. 16

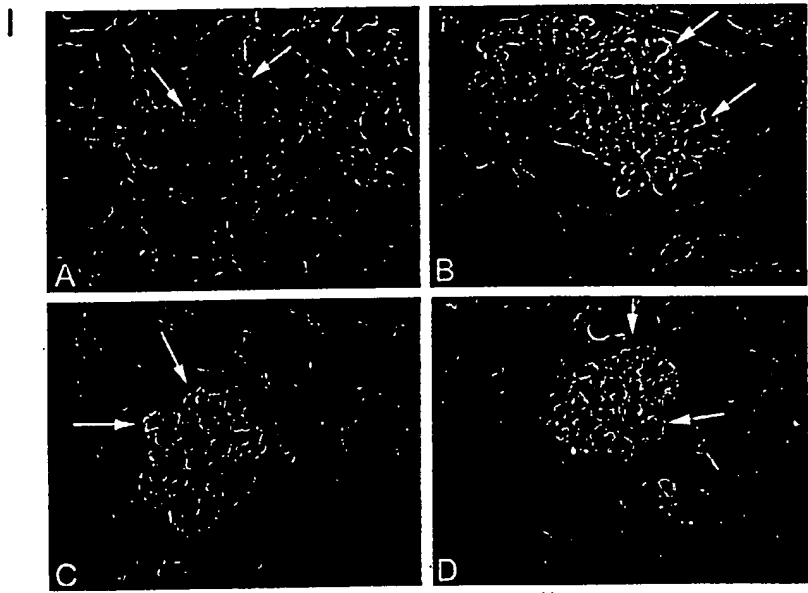
Figure 17



	$\alpha 1$ integrin	$\alpha 3(\text{IV})$ collagen
A	+/+	+/+
B	+/+	-/-
C	-/-	-/-

* magnification bars are 10 μM

Laminin α 2 Chain



2 wk SV/J

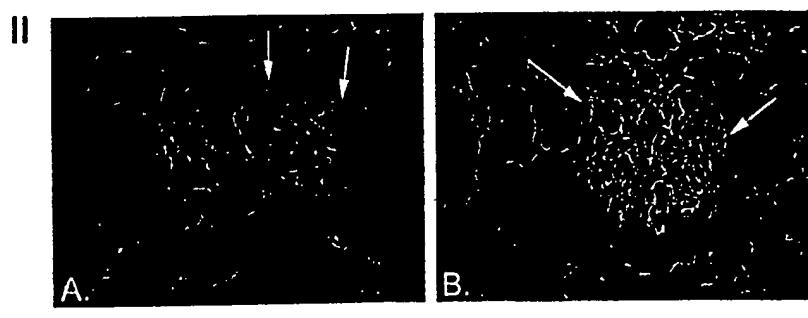


Fig. 18

2 wk SV/J Alport

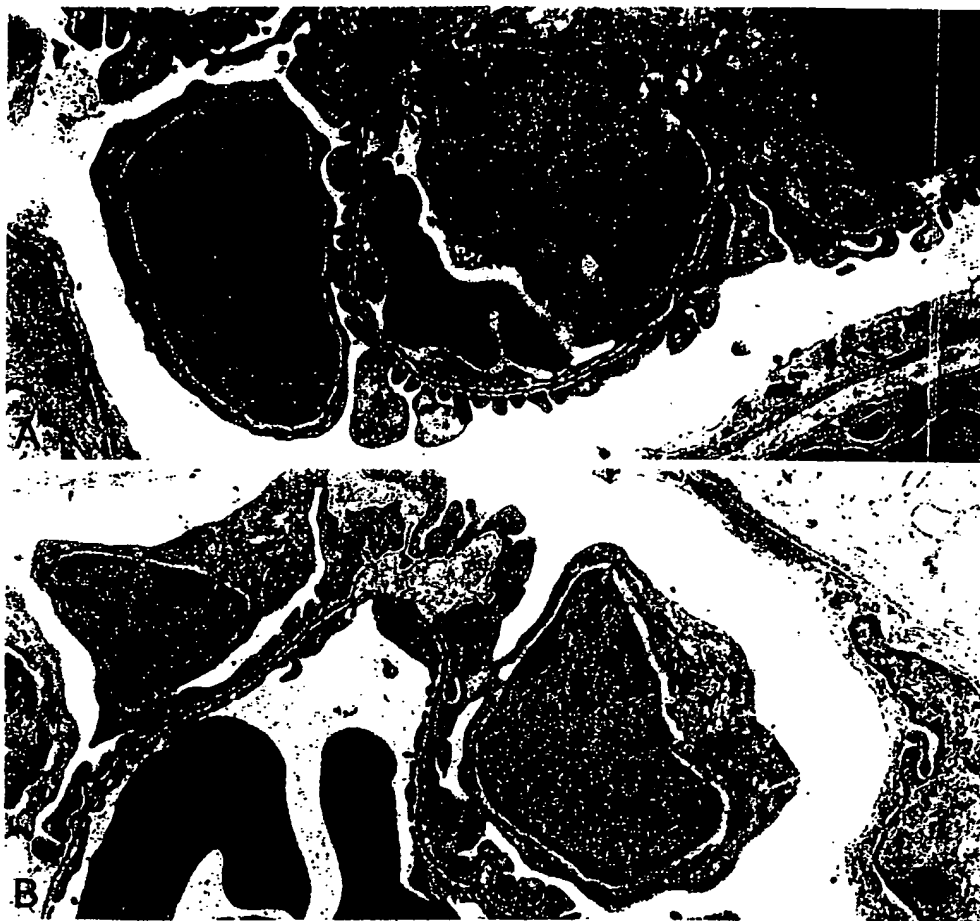


Fig. 19

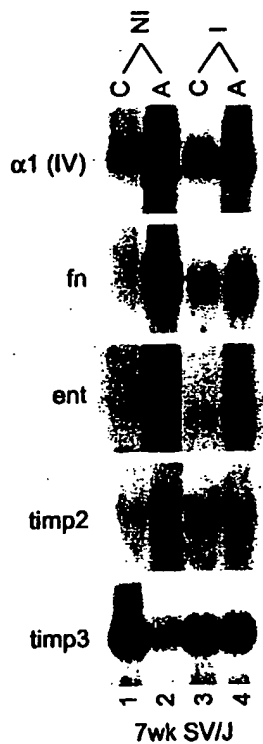


Fig. 20

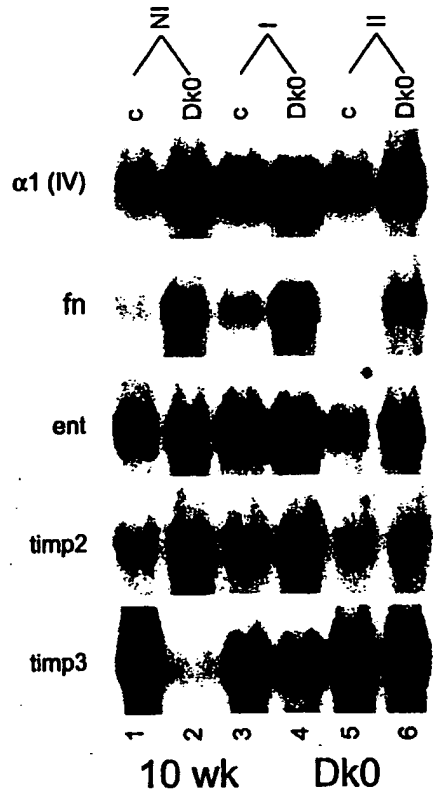


Fig. 21

Jones Silver Methenamine

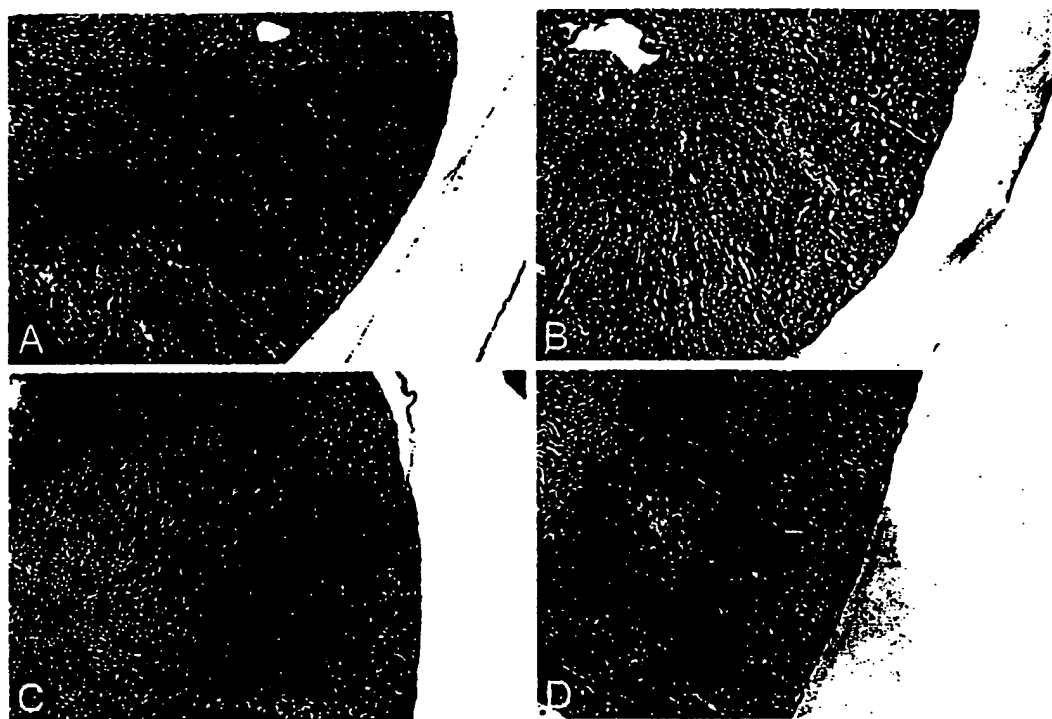


Fig. 22

Collagen Type I

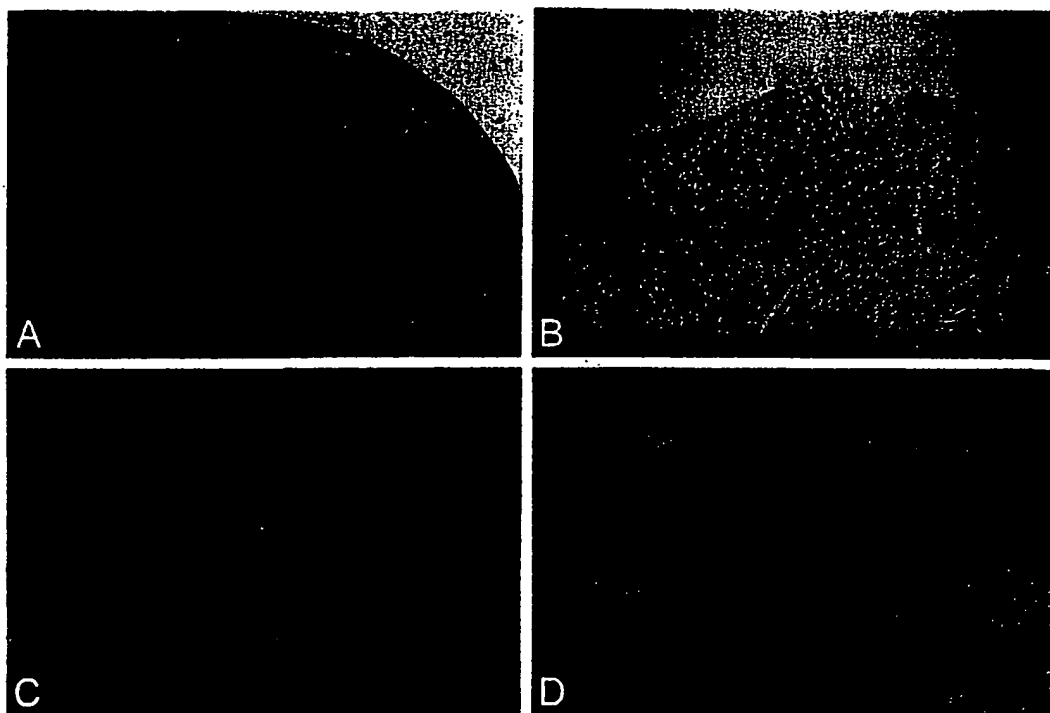


Fig. 23

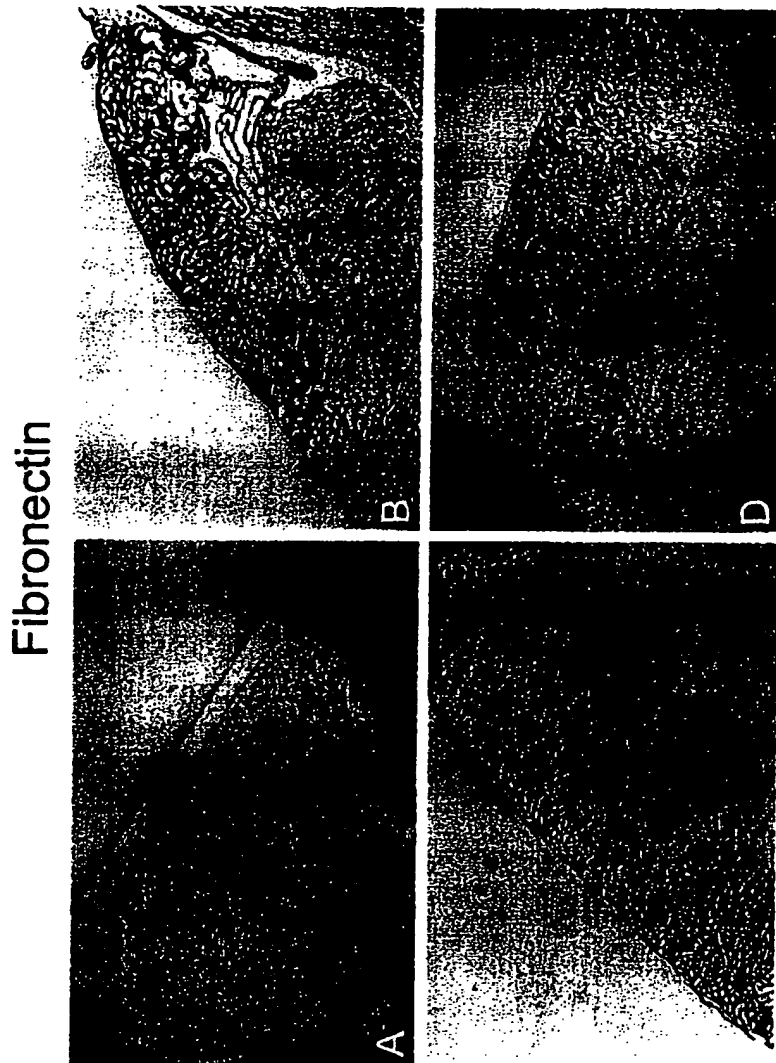


Fig. 24

**This Page is Inserted by IFW Indexing and Scanning
Operations and is not part of the Official Record**

BEST AVAILABLE IMAGES

Defective images within this document are accurate representations of the original documents submitted by the applicant.

Defects in the images include but are not limited to the items checked:

- BLACK BORDERS
- IMAGE CUT OFF AT TOP, BOTTOM OR SIDES
- FADED TEXT OR DRAWING
- BLURRED OR ILLEGIBLE TEXT OR DRAWING
- SKEWED/SLANTED IMAGES
- COLOR OR BLACK AND WHITE PHOTOGRAPHS
- GRAY SCALE DOCUMENTS
- LINES OR MARKS ON ORIGINAL DOCUMENT
- REFERENCE(S) OR EXHIBIT(S) SUBMITTED ARE POOR QUALITY
- OTHER: _____

IMAGES ARE BEST AVAILABLE COPY.

As rescanning these documents will not correct the image problems checked, please do not report these problems to the IFW Image Problem Mailbox.